

Series 26 Modules Low-Water Cutoff – Plug-In Modules

- ▶ Powered Contacts
 - ▶ Modular Plug-In Design
 - ▶ Low Voltage Sensor
 - ▶ 11-Pin Socket
 - ▶ CSA Approved
 - ▶ Optional Test Feature
 - ▶ Optional Dirty Electrode Detection
 - ▶ Optional Manual Reset Button Feature.
 - ▶ Solid State Reliability
 - ▶ LED Monitoring
 - ▶ Time Delays Available
 - ▶ Meets CSD1 Requirements
 - ▶ U.L. “Limit Control”
- If Level Drops, Control is Deactivated Until Liquid Level Returns to Normal and Pushbutton is Depressed
- ▶ Optional Power Outage Feature Ignores Nuisance Outages and Resets When Power is Restored

Series 26M – General Purpose Control

Series 26M is designed for low-water cutoff protection. This control meets CSD1 requirements for boiler low water cutoff. Series 26M features powered contacts. If non-powered contacts are required, request information on Series 26NM.

Specifications

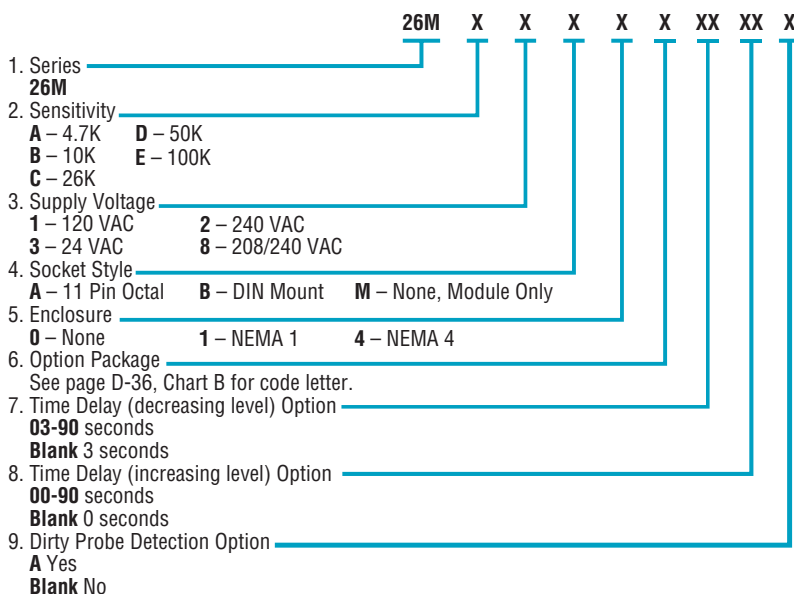
Contact Design	1 N.O. & 1 N.C. (powered)
Contact Rating (24/120/240VAC)	10 amp Resistive 1/3 hp
Mode of Operation	Direct
Sensitivity	0 - 26K ohm, factory set
Primary Voltage	24 VAC, 120 VAC, 240 VAC ¹
Secondary Voltage	12 VAC
Temperature	-40°F to 150°F
Approvals¹	U.L. 353 File # MP1430; CSA
Terminal Style	Screw connector
Options	Time Delays, Power Outage, Manual Reset, Test Feature, Dirty electrode detection

Notes:

1. 208/240 VAC unit does not carry U.L. Limit Control recognition.

How to Order

Use the **Bold** characters from the chart below to construct a product code.



Socket Details and Option Availability are located on page D-36 and D-37.

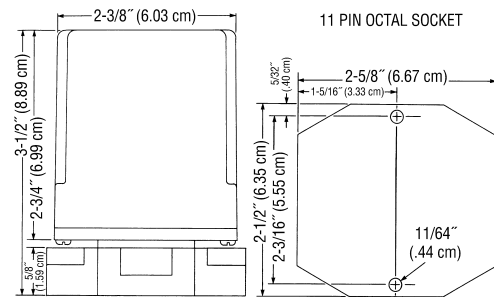


Series 26M

Applications

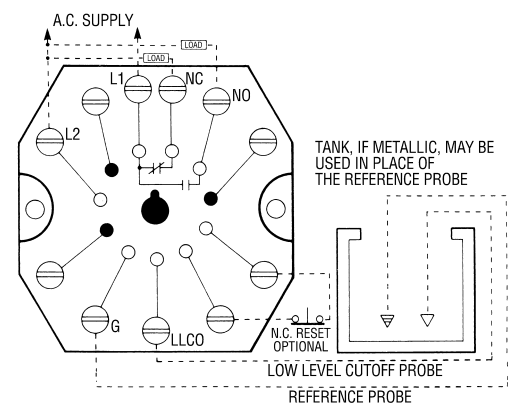
- Low-Water Cutoff
- Point Level
- Alarms

Dimensions



Note: Controls also available with DIN mount socket.

Wiring



Caution: Contacts are powered. If non-powered contacts are required, request information on Series 26NM.