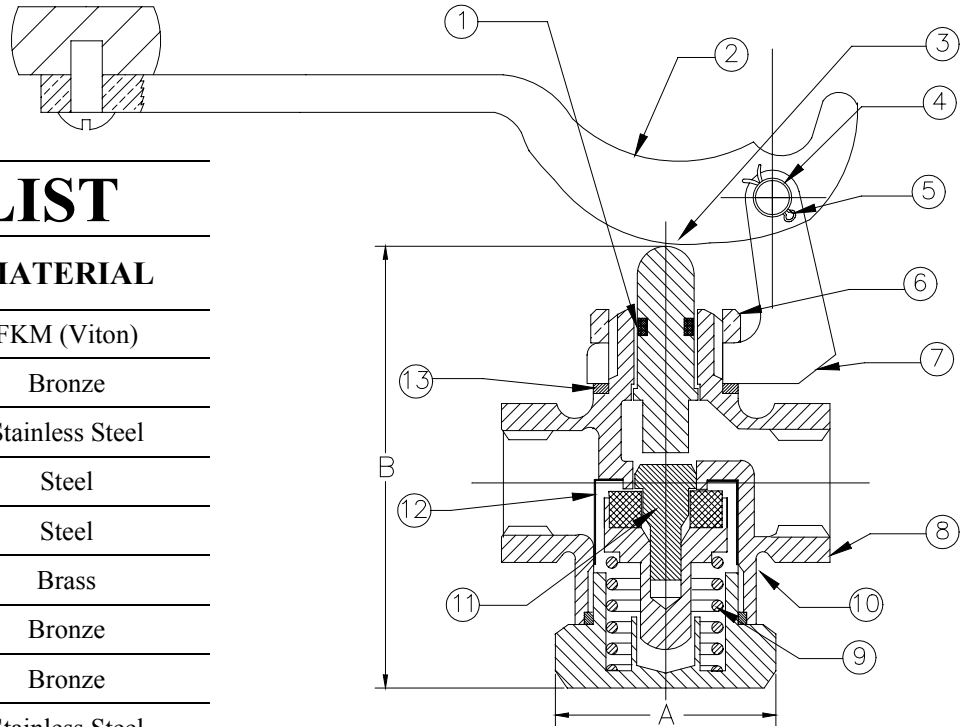




**UNITED BRASS WORKS, INC.**  
 714 S. Main St., Randleman, NC 27317  
 Tel: 800-334-3035 Fax: 800-498-4696 www.ubw.com



**Model 44SS Whistle Valve**  
**Quick-Opening Self-Closing Globe Valve**  
**With Yoke & Lever**  
**Built-In Strainer Screen**  
**150WSP • 400 WOG**  
**100% Pressure Tested**  
**Threaded Ends**  
**PTFE Disc • Integral Seat**



**MATERIAL LIST**

| NO. | DESCRIPTION | MATERIAL        |
|-----|-------------|-----------------|
| 1   | O-Ring      | FKM (Viton)     |
| 2   | Lever       | Bronze          |
| 3   | Stem        | Stainless Steel |
| 4   | Clevis Pin  | Steel           |
| 5   | Cotter Pin  | Steel           |
| 6   | Lock Nut    | Brass           |
| 7   | Yoke        | Bronze          |
| 8   | Body        | Bronze          |
| 9   | Spring      | Stainless Steel |
| 10  | Cap         | Brass           |
| 11  | Disc Holder | Brass           |
| 12  | Screen      | Stainless Steel |
| 13  | Lock Washer | Copper          |

|           | A    | B    | Qty. Per Ctn. |
|-----------|------|------|---------------|
| 44NY 1/4" | 1.88 | 2.50 | 12            |



**UNITED BRASS WORKS, INC.**  
 714 S. Main St., Randleman, NC 27317  
 Tel: 800-334-3035 Fax: 800-498-4696 www.ubw.com



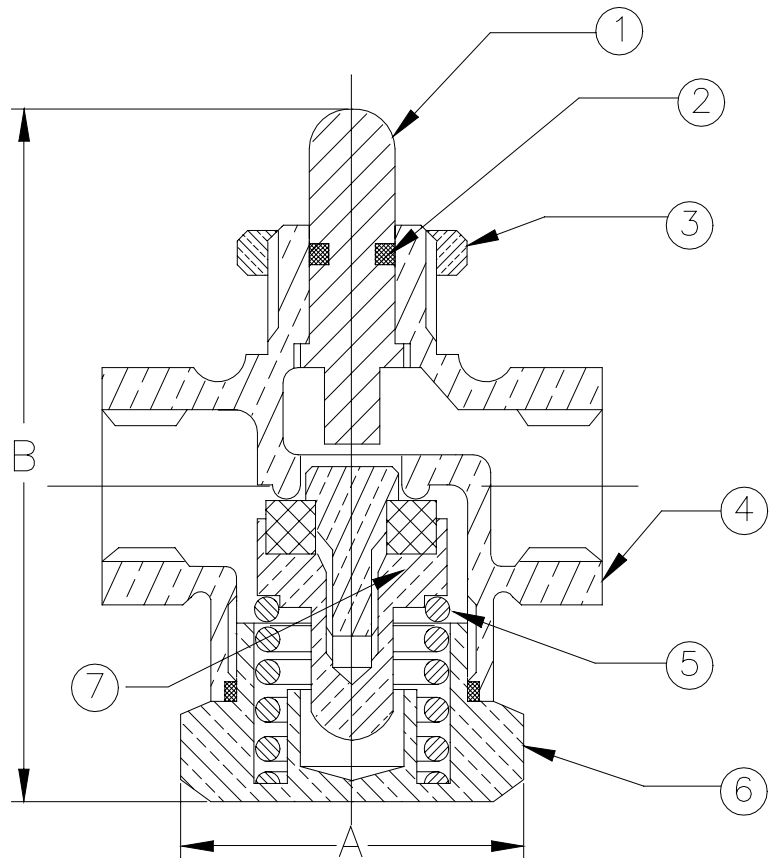
## Model 44 Whistle Valve

**Quick-Opening Self-Closing Globe Valve  
 Less Yoke & Lever  
 150WSP • 400 WOG  
 100% Pressure Tested  
 Threaded Ends  
 PTFE Disc • Integral Seat**

### MATERIAL LIST

| NO. | DESCRIPTION | MATERIAL        |
|-----|-------------|-----------------|
| 1   | Stem        | Stainless Steel |
| 2   | O-Ring      | Viton           |
| 3   | Lock Nut    | Brass           |
| 4   | Body        | Bronze          |
| 5   | Spring      | Stainless Steel |
| 6   | Cap         | Brass           |
| 7   | Disc Holder | Bronze          |

|         | A    | B    | Qty. Per Ctn. |
|---------|------|------|---------------|
| 44 1/4" | 1.88 | 2.50 | 25            |





**UNITED BRASS WORKS, INC.**  
 714 S. Main St., Randleman, NC 27317  
 Tel: 800-334-3035 Fax: 800-498-4696 www.ubw.com

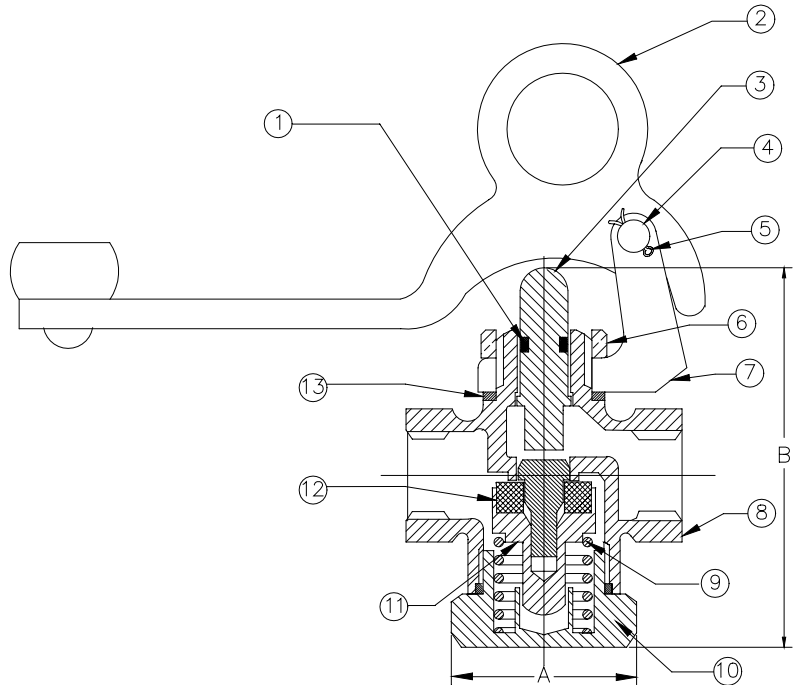


## Model 44NY Whistle Valve

**Quick-Opening Self-Closing Globe Valve  
 With Yoke & Loop Handle Lever  
 150WSP • 400 WOG  
 100% Pressure Tested  
 Threaded Ends  
 PTFE Disc • Integral Seat**

### MATERIAL LIST

| NO. | DESCRIPTION | MATERIAL        |
|-----|-------------|-----------------|
| 1   | O-Ring      | FKM (Viton)     |
| 2   | Lever       | Bronze          |
| 3   | Stem        | Stainless Steel |
| 4   | Clevis Pin  | Steel           |
| 5   | Cotter Pin  | Steel           |
| 6   | Lock Nut    | Brass           |
| 7   | Yoke        | Bronze          |
| 8   | Body        | Bronze          |
| 9   | Spring      | Stainless Steel |
| 10  | Cap         | Brass           |
| 11  | Disc Holder | Brass           |
| 12  | Disc        | PTFE            |
| 13  | Washer      | Copper          |



|           | A    | B    | Qty. Per Ctn. |
|-----------|------|------|---------------|
| 44NY 1/4" | 1.88 | 2.50 | 12            |



**UNITED BRASS WORKS, INC.**  
 714 S. Main St., Randleman, NC 27317  
 Tel: 800-334-3035 Fax: 800-498-4696 www.ubw.com



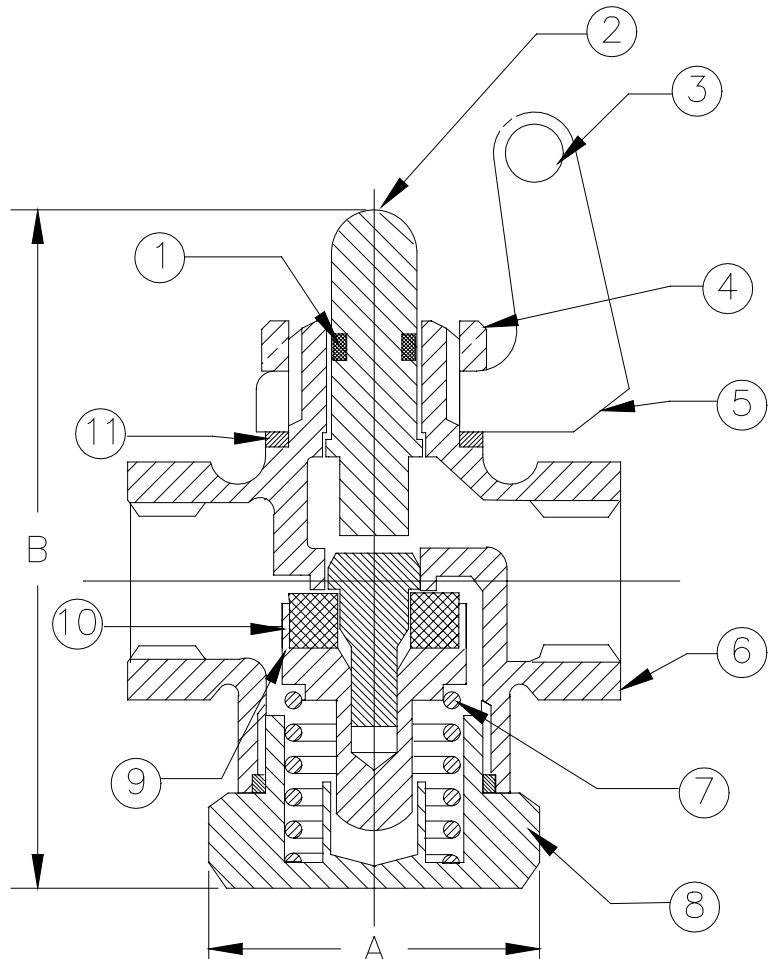
## Model 44NYLL Whistle Valve

**Quick-Opening Self-Closing Globe Valve  
 With Yoke Less Lever  
 150WSP • 400 WOG  
 100% Pressure Tested  
 Threaded Ends  
 PTFE Disc • Integral Seat**

### MATERIAL LIST

| NO. | DESCRIPTION | MATERIAL        |
|-----|-------------|-----------------|
| 1   | O-Ring      | FKM (Viton)     |
| 2   | Stem        | Stainless Steel |
| 3   | Clevis Pin  | Steel           |
| 4   | Lock Nut    | Brass           |
| 5   | Yoke        | Bronze          |
| 6   | Body        | Bronze          |
| 7   | Spring      | Stainless Steel |
| 8   | Cap         | Brass           |
| 9   | Disc Holder | Brass           |
| 10  | Disc        | PTFE            |
| 11  | Washer      | Copper          |

|             | A    | B    | Qty. Per Ctn. |
|-------------|------|------|---------------|
| 44NYLL 1/4" | 1.88 | 2.50 | 10            |





**UNITED BRASS WORKS, INC.**  
 714 S. Main St., Randleman, NC 27317  
 Tel: 800-334-3035 Fax: 800-498-4696 www.ubw.com

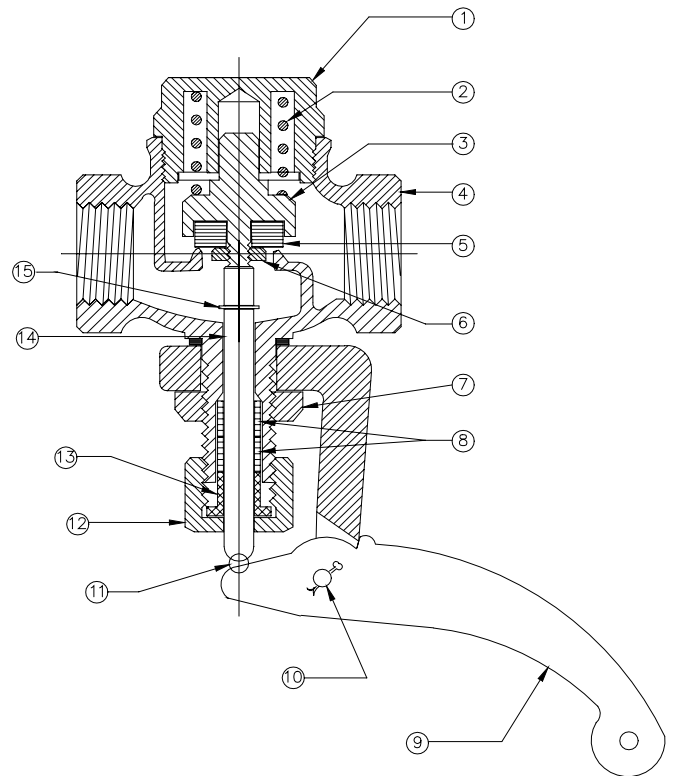


**Model 25WT Whistle Valve**  
**Quick-Opening**  
**Self-Closing Globe Valve**

**200WSP @ 406° Max**  
**400 WOG**  
**100% Pressure Tested**  
**Threaded Ends**  
**PTFE Disc • Integral Seat**

**MATERIAL LIST**

| NO. | DESCRIPTION    | MATERIAL        |
|-----|----------------|-----------------|
| 1   | Cap            | Brass           |
| 2   | Spring         | Stainless Steel |
| 3   | Disc Holder    | Brass           |
| 4   | Body           | Bronze          |
| 5   | Disc           | PTFE            |
| 6   | Disc Nut       | Brass           |
| 7   | Lock Nut       | Bras            |
| 8   | Packing        | NAFG            |
| 9   | Lever          | Bronze          |
| 10  | Clevis Pin     | Steel           |
| 11  | Packing Nut    | Brass           |
| 12  | Packing Gland  | Brass           |
| 13  | Yoke           | Bronze          |
| 14  | Stem           | Stainless Steel |
| 15  | Retaining Ring | Steel           |



|           | A    | B    | Qty. Per Ctn. |
|-----------|------|------|---------------|
| 25WT 1/4" | 2.34 | 3.22 | 10            |
| 25WT 3/8" | 2.34 | 3.22 | 6             |
| 25WT 1/2" | 2.69 | 4.00 | 5             |
| 25WT 3/4" | 3.00 | 4.50 | 6             |
| 25WT 1"   | 3.75 | 5.25 | 4             |



**UNITED BRASS WORKS, INC.**  
 714 S. Main St., Randleman, NC 27317  
 Tel: 800-334-3035 Fax: 800-498-4696 www.ubw.com

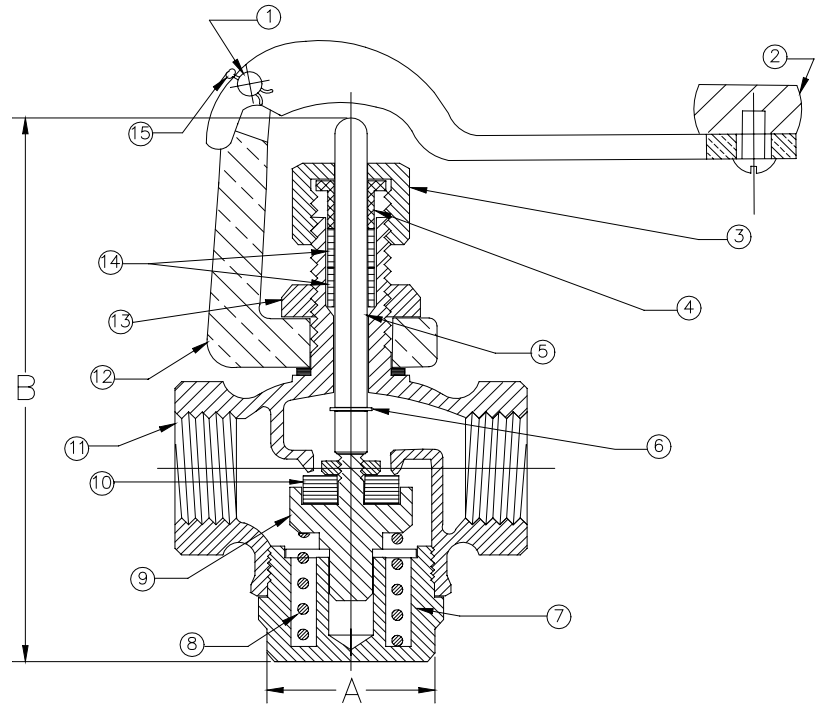


**Model 25WTBL Whistle Valve**  
**Quick-Opening**  
**Self-Closing Globe Valve**  
**With Button Lever**

**200WSP @ 406° Max**  
**400 WOG**  
**100% Pressure Tested • Threaded Ends**  
**PTFE Disc • Integral Seat**

**MATERIAL LIST**

| NO. | DESCRIPTION    | MATERIAL        |
|-----|----------------|-----------------|
| 1   | Clevis Pin     | Steel           |
| 2   | Lever          | Bronze          |
| 3   | Packing Nut    | Brass           |
| 4   | Packing Gland  | Brass           |
| 5   | Stem           | Stainless Steel |
| 6   | Retaining Ring | Steel           |
| 7   | Cap            | Brass           |
| 8   | Spring         | Stainless Steel |
| 9   | Disc Holder    | Brass           |
| 10  | Disc           | PTFE            |
| 11  | Body           | Bronze          |
| 12  | Yoke           | Bronze          |
| 13  | Lock Nut       | Brass           |
| 14  | Packing        | NAFG            |
| 15  | Cotter Pin     | Steel           |



|             | A    | B    | Qty. Per Ctn. |
|-------------|------|------|---------------|
| 25WTBL 3/8" | 2.34 | 3.21 | 6             |
| 25WTBL 1/2" | 2.69 | 4.00 | 5             |



**UNITED BRASS WORKS, INC.**  
 714 S. Main St., Randleman, NC 27317  
 Tel: 800-334-3035 Fax: 800-498-4696 www.ubw.com



**Model 25WACT Whistle Valve**  
**Quick-Opening**  
**Self-Closing Globe Valve**

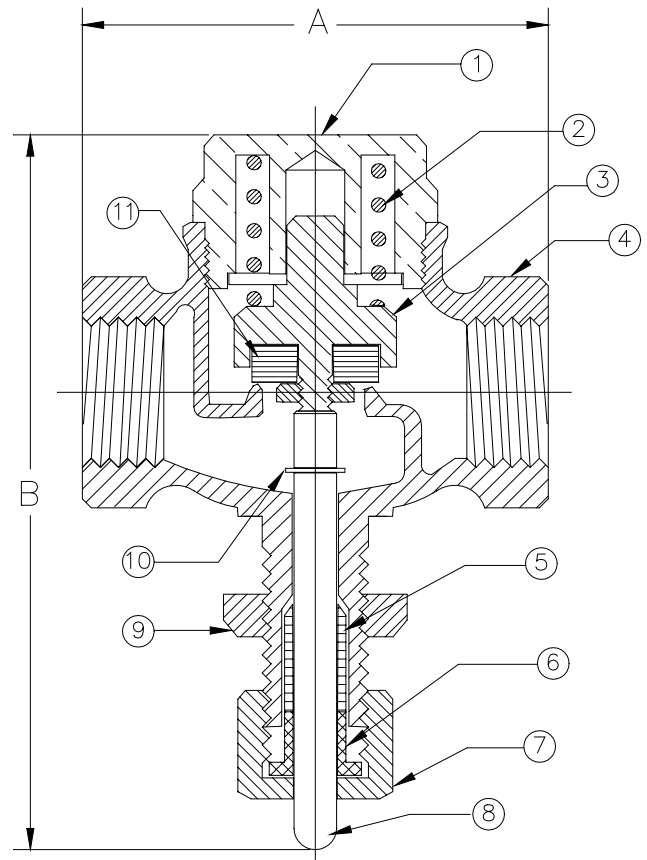
**200WSP @ 406° Max**  
**400 WOG**

**100% Pressure Tested • Threaded Ends**  
**PTFE Disc • Integral Seat**

**MATERIAL LIST**

| NO. | DESCRIPTION    | MATERIAL        |
|-----|----------------|-----------------|
| 1   | Cap            | Brass           |
| 2   | Spring         | Stainless Steel |
| 3   | Disc Holder    | Brass           |
| 4   | Body           | Bronze          |
| 5   | Packing        | NAFG            |
| 6   | Gland          | Brass           |
| 7   | Packing Nut    | Brass           |
| 8   | Stem           | Stainless Steel |
| 9   | Lock Nut       | Brass           |
| 10  | Retaining Ring | Steel           |
| 11  | Disc           | PTFE            |

|           | A    | B    | Qty. Per Ctn. |
|-----------|------|------|---------------|
| 25WT ¼"   | 2.34 | 3.22 | 10            |
| 25WT 3/8" | 2.34 | 3.22 | 6             |
| 25WT ½"   | 2.69 | 4.00 | 5             |
| 25WT ¾"   | 3.00 | 4.50 | 6             |
| 25WT 1"   | 3.75 | 5.25 | 4             |





**UNITED BRASS WORKS, INC.**  
 714 S. Main St., Randleman, NC 27317  
 Tel: 800-334-3035 Fax: 800-498-4696 www.ubw.com



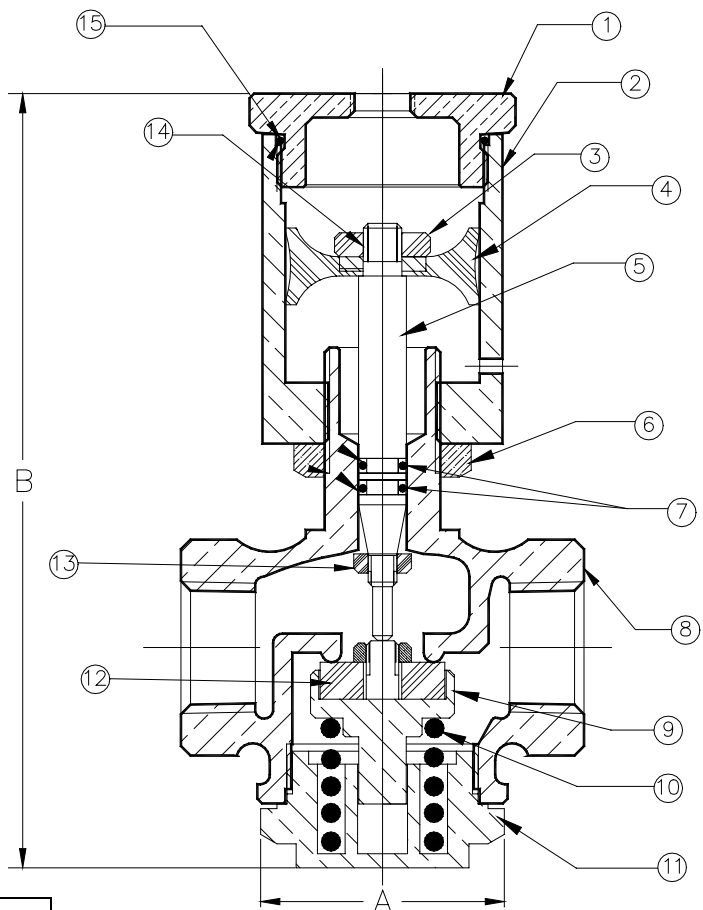
## Model VC25WT Pneumatic Whistle Valve

**125WSP @ 350° Max**  
**200 WOG**  
**100% Pressure Tested**  
**Threaded Ends**  
**PTFE Disc • Integral Seat**

*\* Minimum Air Pressure Requirement - 80PSI.*

### MATERIAL LIST

| NO. | DESCRIPTION | MATERIAL        |
|-----|-------------|-----------------|
| 1   | Cap         | Brass           |
| 2   | Cylinder    | Brass           |
| 3   | Nut         | Brass           |
| 4   | Piston Cup  | Silicon         |
| 5   | Stem        | Stainless Steel |
| 6   | Lock Nut    | Brass           |
| 7   | O-Ring      | FKM (Viton)     |
| 8   | Body        | Bronze          |
| 9   | Disc Holder | Brass           |
| 10  | Spring      | Stainless Steel |
| 11  | Cap         | Brass           |
| 12  | Disc        | PTFE            |
| 13  | Nut         | Steel           |
| 14  | Nut         | Steel           |
| 15  | O-Ring      | BUNA            |



|             | A    | B    | Qty. Per Ctn. |
|-------------|------|------|---------------|
| VC25WT 1/2" | 2.69 | 4.00 | 5             |