



UNITED BRASS WORKS, INC.
 714 S. Main St., Randleman, NC 27317
 Tel: 800-334-3035 Fax: 800-498-4696 www.ubw.com

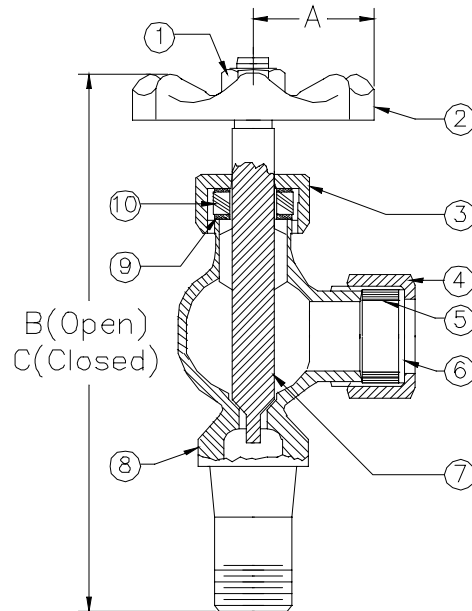


Model 905A^{1/2}" Short Shank Upper Fixture

**250 WSP @ 406°F Max
 400WOG
 Rising Stem • Bronze Body
 Aluminum Hand Wheel**

MATERIAL LIST

NO.	DESCRIPTION	MATERIAL
1	Screw	Steel
2	Hand Wheel	Aluminum
3	Packing Nut	Brass
4	Glass Washer Nut	Brass
5	Glass Washer	EPDM
6	Washer	Steel
7	Stem	Brass
8	Body	Bronze
9	Washer	Brass
10	Packing	PTFE Aramid



Size	1/2"
A	1.25
B	5.15
C	4.97
Ship Wt. (lbs.)	0.63
Qty. Per Carton	12

ADDITIONAL CONFIGURATIONS

905APW – 1/2 Short Shank w/ Plastic Hand Wheel
905AS – 1/2 Short Shank w/ Ball Check
**905ASPW – 1/2 Short Shank w/ Ball Check
 and Plastic Hand Wheel**



UNITED BRASS WORKS, INC.
 714 S. Main St., Randleman, NC 27317
 Tel: 800-334-3035 Fax: 800-498-4696 www.ubw.com



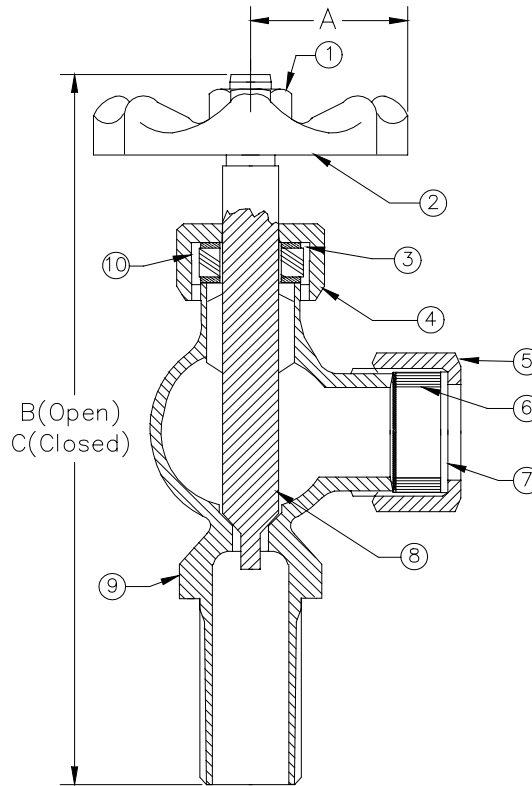
Model 905 $\frac{1}{2}$ " Long Shank Upper Fixture

**250 WSP @ 406°F Max
 400WOG**

**Rising Stem • Bronze Body
 Aluminum Hand Wheel**

MATERIAL LIST

NO.	DESCRIPTION	MATERIAL
1	Screw	Steel
2	Hand Wheel	Aluminum
3	Packing Nut	Brass
4	Washer	Brass
5	Glass Washer Nut	Brass
6	Glass Washer	EPDM
7	Washer	Steel
8	Stem	Brass
9	Body	Bronze
10	Packing	PTFE Aramid



Size	$\frac{1}{2}$ "
A	1.25
B	5.20
C	5.02
Ship Wt. (lbs.)	0.75
Qty. Per Carton	12

ADDITIONAL CONFIGURATIONS

905PW – $\frac{1}{2}$ Long Shank w/ Plastic Hand Wheel
905S – $\frac{1}{2}$ Long Shank w/ Ball Check
**905SPW – $\frac{1}{2}$ Long Shank w/ Ball Check
 and Plastic Hand Wheel**



UNITED BRASS WORKS, INC.
 714 S. Main St., Randleman, NC 27317
 Tel: 800-334-3035 Fax: 800-498-4696 www.ubw.com



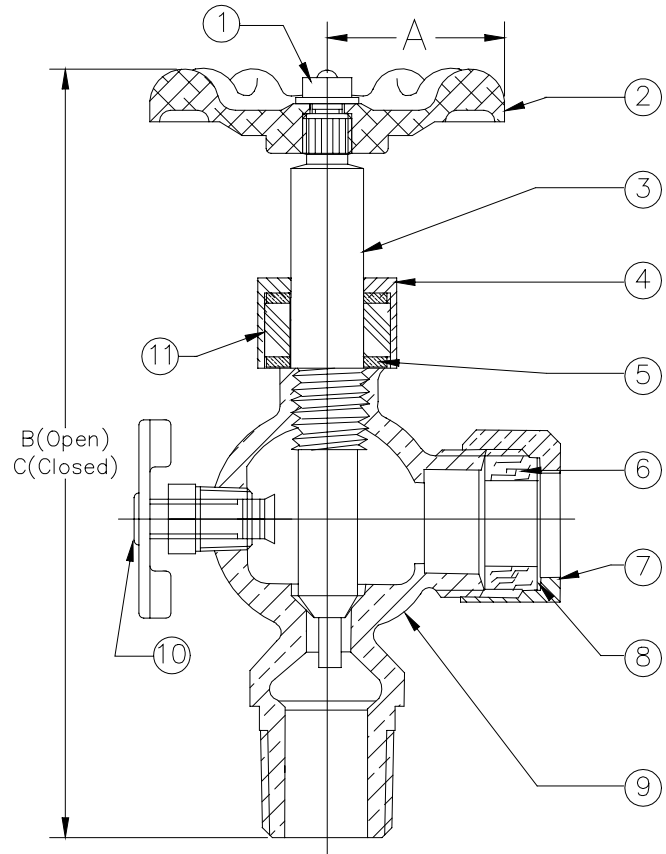
Model 946A 1/2" Short Shank Lower Fixture

**250 WSP @ 406°F Max
 400WOG**

**Rising Stem • Bronze Body
 Aluminum Hand Wheel**

MATERIAL LIST

NO.	DESCRIPTION	MATERIAL
1	Screw	Steel
2	Hand Wheel	Aluminum
3	Stem	Brass
4	Packing Nut	Brass
5	Washer	Brass
6	Glass Washer	EPDM
7	Glass Washer Nut	Brass
8	Washer	Steel
9	Body	Bronze
10	Drain Cock	Brass
11	Packing	PTFE Aramid



Size	1/2"
A	1.25
B	5.20
C	5.02
Ship Wt. (lbs.)	0.63
Qty. Per Carton	12

ADDITIONAL CONFIGURATIONS

946APW – 1/2 Long Shank w/ Plastic Hand Wheel
905AS – 1/2 Long Shank w/ Ball Check
**905ASPW – 1/2 Long Shank w/ Ball Check
 and Plastic Hand Wheel**



UNITED BRASS WORKS, INC.
 714 S. Main St., Randleman, NC 27317
 Tel: 800-334-3035 Fax: 800-498-4696 www.ubw.com



Model 946 1/2" Long Shank Lower Fixture

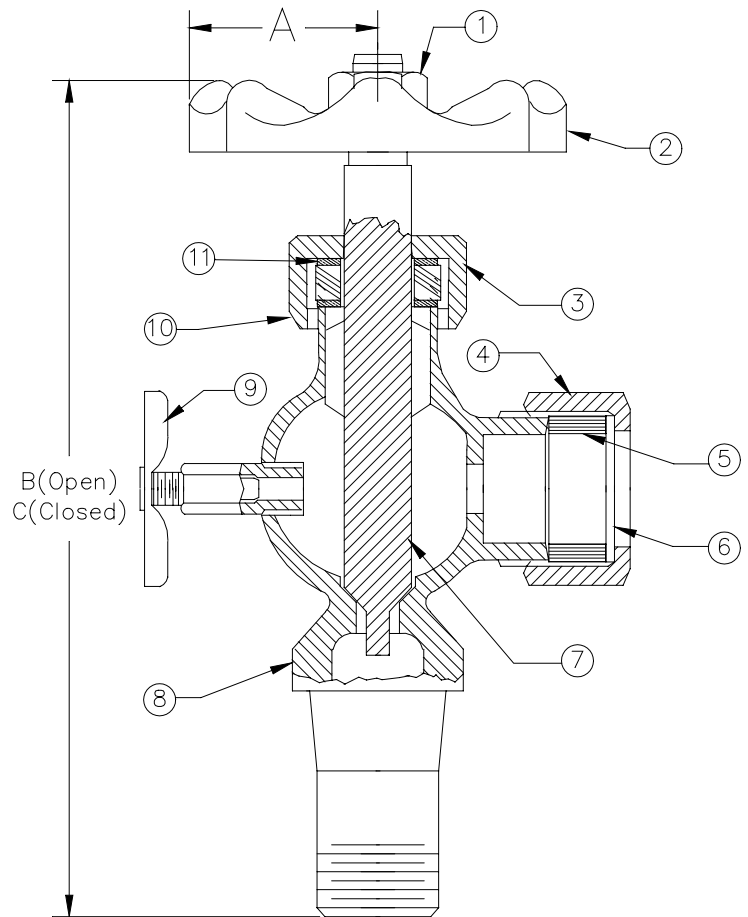
**250 WSP @ 406°F Max
 400WOG**

**Rising Stem ~ Bronze Body
 Aluminum Hand Wheel**

MATERIAL LIST

NO.	DESCRIPTION	MATERIAL
1	Screw	Steel
2	Hand Wheel	Aluminum
3	Stem	Brass
4	Packing Nut	Brass
5	Washer	Brass
6	Glass Washer	EPDM
7	Glass Washer Nut	Brass
8	Washer	Steel
9	Body	Bronze
10	Drain Cock	Brass
11	Packing	PTFE Aramid

Size	1/2"
A	1.25
B	5.20
C	5.02
Ship Wt. (lbs.)	0.75
Qty. Per Carton	12



ADDITIONAL CONFIGURATIONS

946PW 1/2" Long Shank w/ Plastic Hand Wheel
946S 1/2" Long Shank w/ Ball check
946SPW 1/2" Long Shank w/ Ball Check & Plastic Hand Wheel

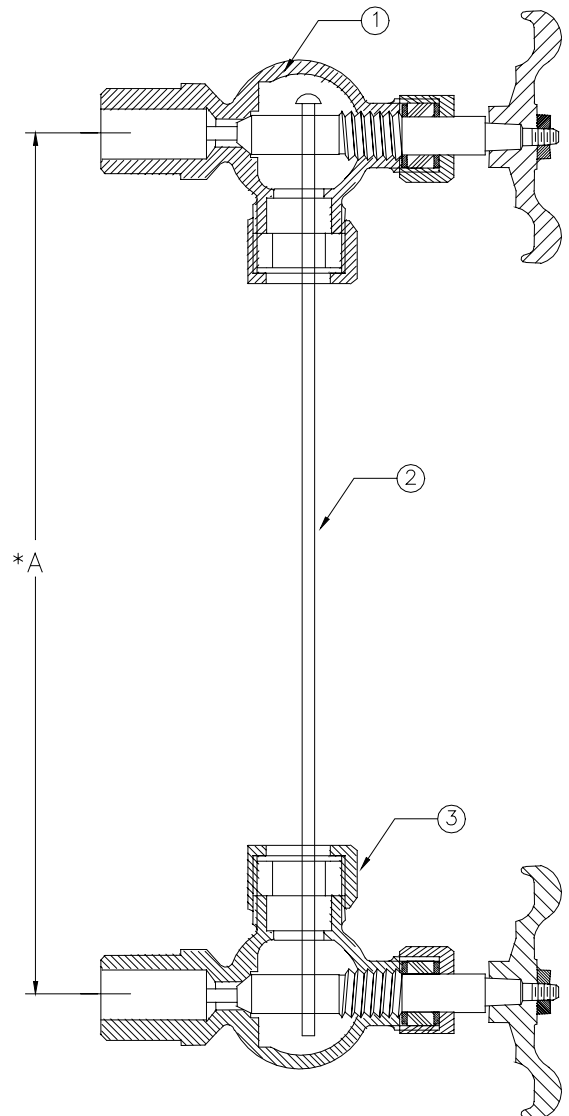


Water Gauge Fixture Sets

**250 WSP @ 406°F Max
 400WOG**

AVAILABLE MODELS

- 34014 1/2" long Shank Set w/ Ball Check*
- 34014PW 1/2" Long Shank Set w/ Ball Checks & Plastic Hand Wheels*
- 34015 1/2" Short Shank Set w/ Ball Checks*
- 34015PW 1/2" Short Shank Set / Ball Checks & Plastic Hand Wheels*
- 34017 1/2" Long Shank Set*
- 34018 1/2" Short Shank Set*
- 34020 1/2" Long Shank Set w/ Plastic Hand Wheel*
- 34021 1/2" Long Shank Set Less Protector Rods*
- 34033 1/2" Short Shank Set Less Protector Rods*
- 34035 1/2" Short Shank Set w/ Ball Check Less Protector Rods*



**A To determine proper glass length,
 subtract 1 1/8" from center to center
 dimensions of the installed valves.*