



UNITED BRASS WORKS, INC.
 714 S. Main St., Randleman, NC 27317
 Tel: 800-334-3035 Fax: 800-498-4696 www.ubw.com



Model 850 1/2" Steam Trap

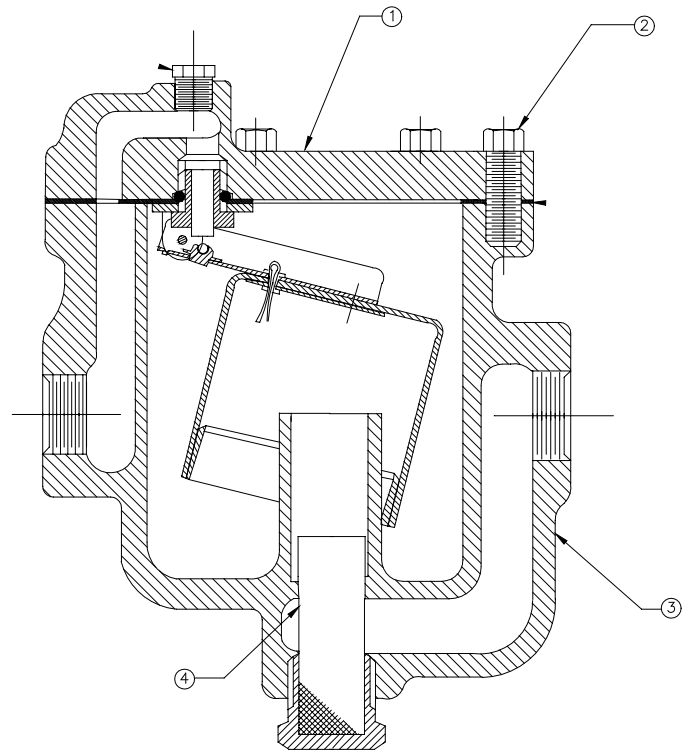
150WSP Body Rating
Operating Range 50 – 125PSI
Ductile Iron Construction
Stainless Steel Ball & Seat

E-Coated Inside & Out For Corrosion Resistance.

Replacement cover assembly Model 850AL.

MATERIAL LIST

NO.	DESCRIPTION	MATERIAL
1	Cover Assembly	Ductile Iron
2	Cap Screw	Stainless Steel
3	Body	Ductile Iron
4	Strainer	Stainless Steel



Operating Pressure

Model	PSI	60	80	100	125
850 1/2"	Pounds Condensate Per Hour	384	416	466	496



UNITED BRASS WORKS, INC.
 714 S. Main St., Randleman, NC 27317
 Tel: 800-334-3035 Fax: 800-498-4696 www.ubw.com



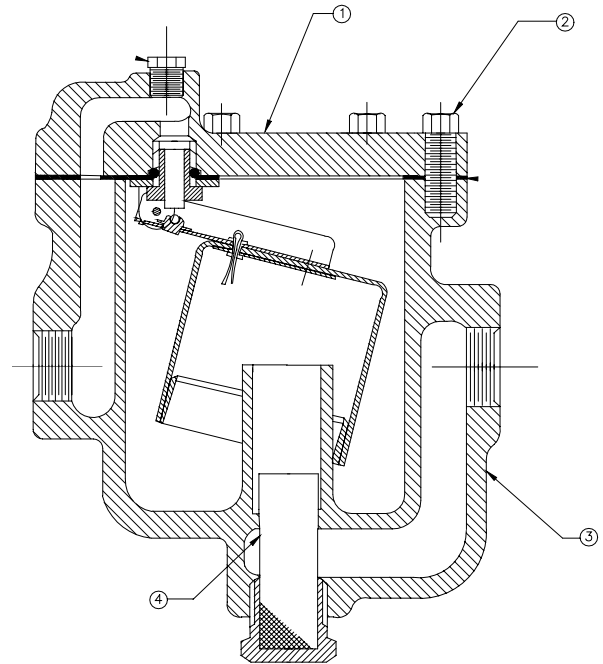
Model 849 1/2" Steam Trap

150WSP Body Rating
Operating Range 5 – 50PSI
Ductile Iron Construction
Stainless Steel Ball & Seat

E-Coated Inside & Out For Corrosion Resistance.
Replacement cover assembly Model 850F.

MATERIAL LIST

NO.	DESCRIPTION	MATERIAL
1	Cover Assembly	Ductile Iron
2	Cap Screw	Stainless Steel
3	Body	Ductile Iron
4	Strainer	Stainless Steel



Operating Pressure

Model	PSI	5	10	20	30	40	50
849A 1/2"	Pounds Condensate Per Hour	383	461	566	629	681	765



UNITED BRASS WORKS, INC.
 714 S. Main St., Randleman, NC 27317
 Tel: 800-334-3035 Fax: 800-498-4696 www.ubw.com



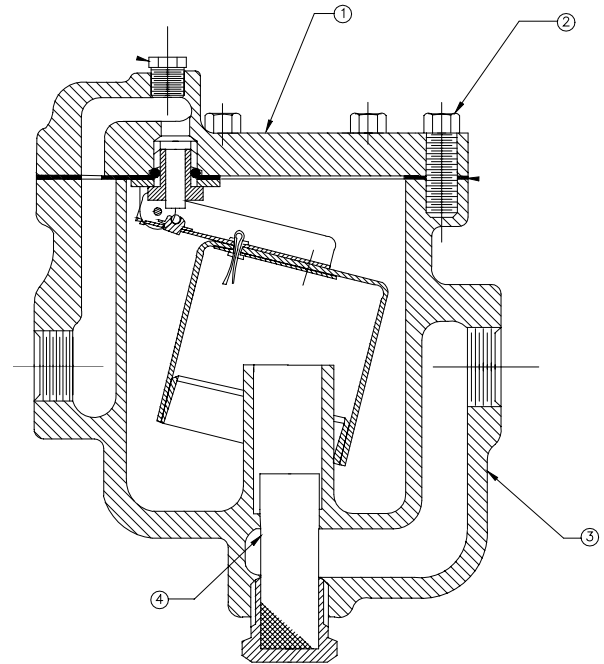
Model 849A 3/4" Steam Trap

150WSP Body Rating
Operating Range 50 – 125PSI
Ductile Iron Construction
Stainless Steel Ball & Seat

E-Coated Inside & Out For Corrosion Resistance.
Replacement cover assembly Model 850AL.

MATERIAL LIST

NO.	DESCRIPTION	MATERIAL
1	Cover Assembly	Ductile Iron
2	Cap Screw	Stainless Steel
3	Body	Ductile Iron
4	Strainer	Stainless Steel



Operating Pressure

Model	PSI	60	80	100	125
849A 3/4"	Pounds Condensate Per Hour	384	416	466	496



UNITED BRASS WORKS, INC.
 714 S. Main St., Randleman, NC 27317
 Tel: 800-334-3035 Fax: 800-498-4696 www.ubw.com



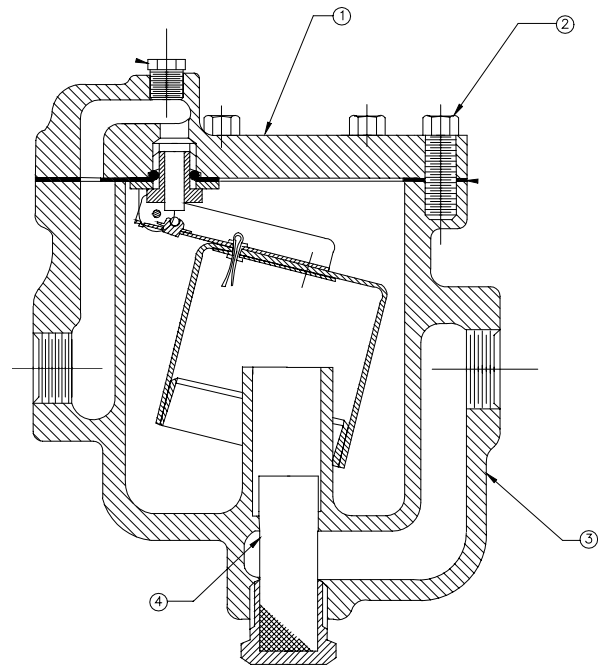
Model 849B 3/4" Steam Trap

150WSP Body Rating
Operating Range 5 – 50PSI
Ductile Iron Construction
Stainless Steel Ball & Seat

E-Coated Inside & Out For Corrosion Resistance.
Replacement cover assembly Model 850F.

MATERIAL LIST

NO.	DESCRIPTION	MATERIAL
1	Cover Assembly	Ductile Iron
2	Cap Screw	Stainless Steel
3	Body	Ductile Iron
4	Strainer	Stainless Steel



Operating Pressure

Model	PSI	5	10	20	30	40	50
849A 3/4"	Pounds Condensate Per Hour	383	461	566	629	681	765