

DESCRIPTION

HydroGuard Series e420 Under-the-Counter thermostatic tempering valves are designed for all applications where the temperature of generated hot water must be controlled for safe, economic use. A powerful advanced thermal actuator quickly senses and compensates for temperature fluctuations induced by water temperature and pressure changes in the supply line.

Rugged construction features cast brass body and corrosion-resistant internal components for years of dependable, trouble-free service. Hex socket makes temperature adjustment quick and easy.

For restricted access control, the Series e420 valve can be housed in a stainless-steel or white baked enamel steel cabinet and can be packaged with solenoid valve(s) (for ESP electronic faucets), checkstops or other accessories common to Powers' cabinet supply offering.



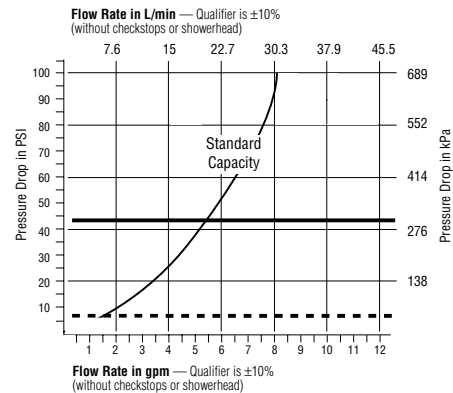
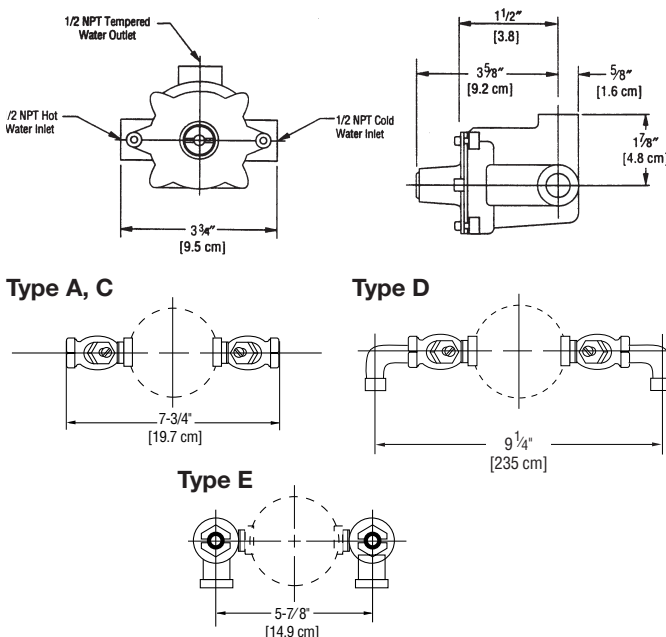
Shown above: Model e420-RB-E-S-S-0-0

SPECIFICATIONS, DIMENSIONS AND FLOW RATE CURVES & CHECKSTOPS

Connections	1/2" NPT Inlets and 1/2" NPT Top Outlet
Capacity (without checkstops)	5.25 gpm [19.9 L/min]* (±0.25 gpm [0.95 L/min])
Maximum Hot Water Supply Temperature	190°F [88°C]
Minimum Hot Water Supply Temperature (not applicable to low temperature hot water valves)	5°F [14°C] above set point
Maximum Operating Pressure	125 psig [862 kPa]
Temperature Ranges:	
ASSE 1016 Type T	65-115°F [18-46°C]
ASSE 1016 Type T/P	90-110°F [32-43°C]
Maximum Static Pressure	125 psig [862 kPa]
Minimum Flow and Pressure Differential:	1 gpm [3.79 L/min]
Shipping Weight	5 lbs. [2.3 kg]
Complaint	ASSE 1016-T/P
Certified	CSA B125

The HydroGuard Series e420 Under-the-Counter valves meet the above operating conditions as stated in ASSE 1016-T/P (45 psi pressure differential, hot water supply between 140°–180°F [60°–82°C], cold water supply less than 70°F [21°C]). If your operating conditions vary from those stated in the standard, performance may vary as well. Consult your local sales representative or a Powers factory engineer to discuss your specific application. All Powers Under-the-Counter thermostatic mixing valves perform to the requirements of standards ASSE 1016-T/P and CSA B125.

* At 45 psi differential [310 kPa], with hot water supply between 140°–180°F [60–82°C] and 50/50 mix.



The flow chart above indicates the HydroGuard Series e420 discharge capacity in gpm for various pressure differentials (the difference between the lowest inlet pressure and the discharge pressure at the valve). Valve sizing affects the performance and reliability of the valve. Under or oversizing of the mixing valve(s) can cause poor operation and possibly injury.

Warning: This is a water tempering device and is not intended or designed for point-of-use shower applications. There is no limit stop. It is strongly recommended that checkstops be installed with this valve even when a downstream shutoff is used.

