

Series 410 Pressure Balancing Mixing Valves
 Type P411 (3 port)/P416 (4 port)
 Type P413 (3 port)/Type P417 (4 port)

Form PS 411/413 v2

SPECIFICATIONS

Connections 1/2" NPT inlets and outlets
Capacity 6.0 gpm @ 45 psi differential [.38l/s]
Maximum Operating Pressure 125 psig
Adjustable Limit Stop Standard
Wall Seal Gasket Supplied with valve
Dial Plate Color Indicating Scale

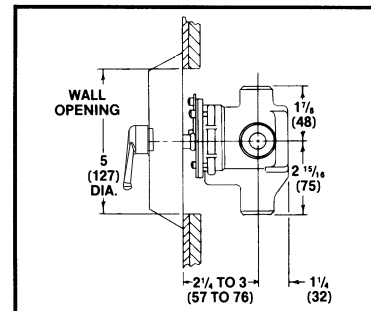
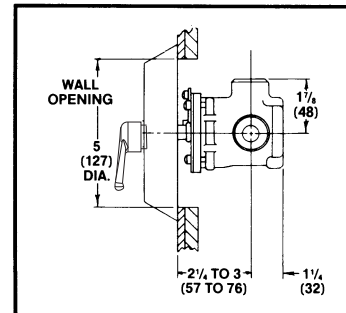
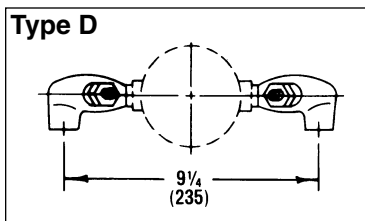
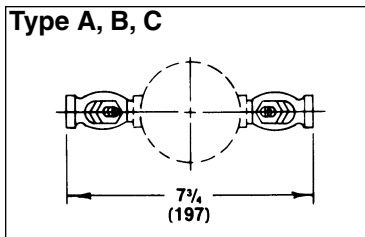
APPLICATION

Concealed pressure balancing water mixing valve for use on shower and tub/shower installations. Use diaphragm type chamber to prevent lime build-up. Adjustable limit stop reduces possible over-adjustment of handle. Heavy cast bronze body, chrome plated die cast face plate, lucite knob type handle, and corrosion resistant material throughout ensure years of trouble-free service.

Type
P411/P416



Type
P413/P417



SPECIFICATION FOR SHOWER AND TUB/SHOWER SYSTEMS — FOR SERIES 410 VALVES

To order complete Series 410 systems...

□ □ □ □ - □ - □ - □ - □ - □ - □ - □

Order Code

Valves

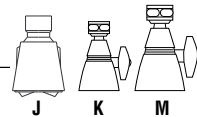
See front page for selection of valve order code

Checkstops (Sold in Pairs)

- Concealed Straight, 1/2" IPS **A**
- Straight, 1/2" Sweat **C**
- Angled, 1/2" Sweat **D**
- Exposed Straight, 1/2" IPS, Chrome-Plated **B**
- Angled, with Strainer, 1/2" IPS,
- Factory installation of checkstops
- (Add suffix "X" to checkstop code) Min. order 10 **X**

Showerheads

- Economizer, Chrome-Plated ABS, Adjustable **J**
- Standard, Chrome-Plated Brass **K**
- Rainbeau, Chrome-Plated, Brass **N**
- Deluxe, Chrome-Plated Brass **M**



Arm and Flange Kits

- Standard Arm and Flange **1**
- Deluxe Arm and Flange **2**

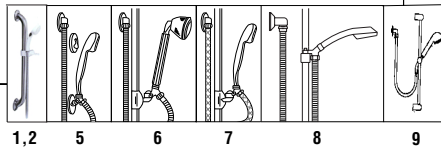
Tub Spouts

- Diverter, Chrome-Plated Brass, 3/4" IPS **Q**
- Non-Diverter, Chrome-Plated, 1/2" IPS **R**
- Diverter, Chrome-Plated, 1/2" IPS **S**
- Diverter, Chrome-Plated Brass, 1/2" IPS **T**
- Diverter, Chrome-Plated, 1/2" Slipfit **U**



Hand Shower Systems

- 24" Chrome ADA Wall Grab Bar System **1**
- 36" Chrome ADA Wall Grab Bar System **2**
- Deluxe, Metal Hose, 30" Slide Bar **3**
- Professional, Vinyl Hose, 30" Slide Bar **4**
- Standard, Metal Hose, Two Wall Hooks **5**
- Deluxe, Metal Hose, 24" Slide Bar **6**
- Professional, Vinyl Hose, 24" Slide Bar **7**
- Standard Plus, Metal Hose, 24" Slide Bar **8**
- European, Metal Hose, 23" Slide Bar **9**



Diverter

- Concealed Diverting Valve, 1/2" IP **Y**
- Exposed Diverter, Shower Arm-Type, Chrome-Plated **Z**

Vacuum Breakers

- Vacuum Breaker, Elevated, Chrome-Plated **V**
- Vacuum Breaker, In-Line **W**

ENGINEERING APPROVAL

Project: _____
 Contractor: _____
 Architect/Engineer: _____



© December 2003 Powers, a division of Watts Water Technologies, Inc.
 USA Phone: 1.800.669.5430 • Fax 1.847.824.0627
 Canada Phone: 1.888.208.8927 • Fax 1.888.882.1979
 www.powerscontrols.com