

PRECISION INSTRUMENT COMPANY

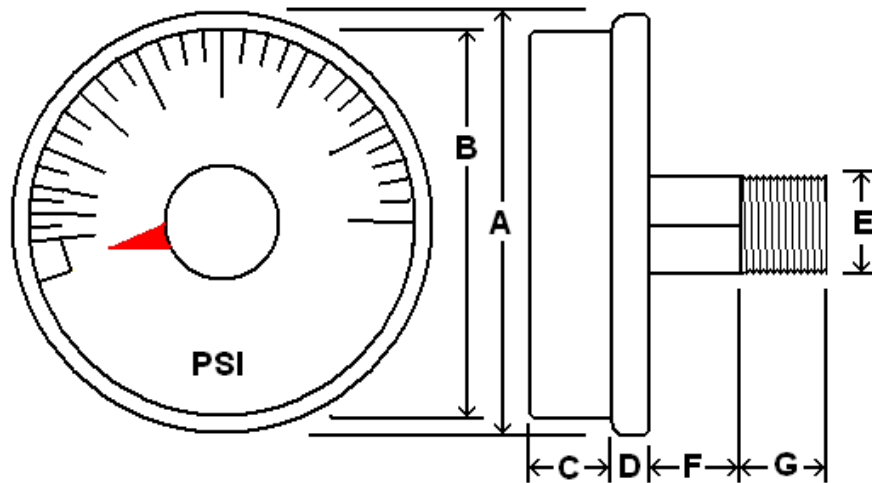
SPIRAL TUBE DIRECT DRIVE GAUGES

Our Spiral Tube Direct Drive Gauge Line Is A High Quality Line Of Direct Drive Gauges Designed For Constant Vibration Applications Such As Pumps And Compressors, Where The Direct Drive (No Movement) Gauge Will Outlast Standard Bourdon Tube Type Pressure Gauges.

This Gauge Has Been Specifically Designed With The Original Equipment Manufacturers In Mind And Are Typically Used On Pneumatic Systems As Well As Any Commercial Or Industrial Application Not Corrosive To Brass And Bronze Wetted Parts.

SPECIFICATIONS:

- **Dial Sizes:** 1 1/8" OR 1 1/2"
- **Connection Sizes:** 1/8"MNPT
- **SS Case / Plastic Lens**
- **Brass Connection**
- **Phosphour Bronze Bourdon Tube**
- **Dry Gauge (Filled Not Available)**
- **Accuracy : 5 %**
- **Single Scale available from stock**
- **Ambient temperature:** FILLED: 30°F to 160°F



		A	B	C	D	E	F	G
1 1/8" Dial	Inches	1.4"	1.2"	.16"	.25"	1/8"	.28"	.32"
	MM	36	30.5	4	6.5	NPT	7.2	8
1 1/2" Dial	Inches	1.65"	1.46"	.23"	.23"	1/8"	.23"	.33"
	MM	42	37	6	6	NPT	6	8.5