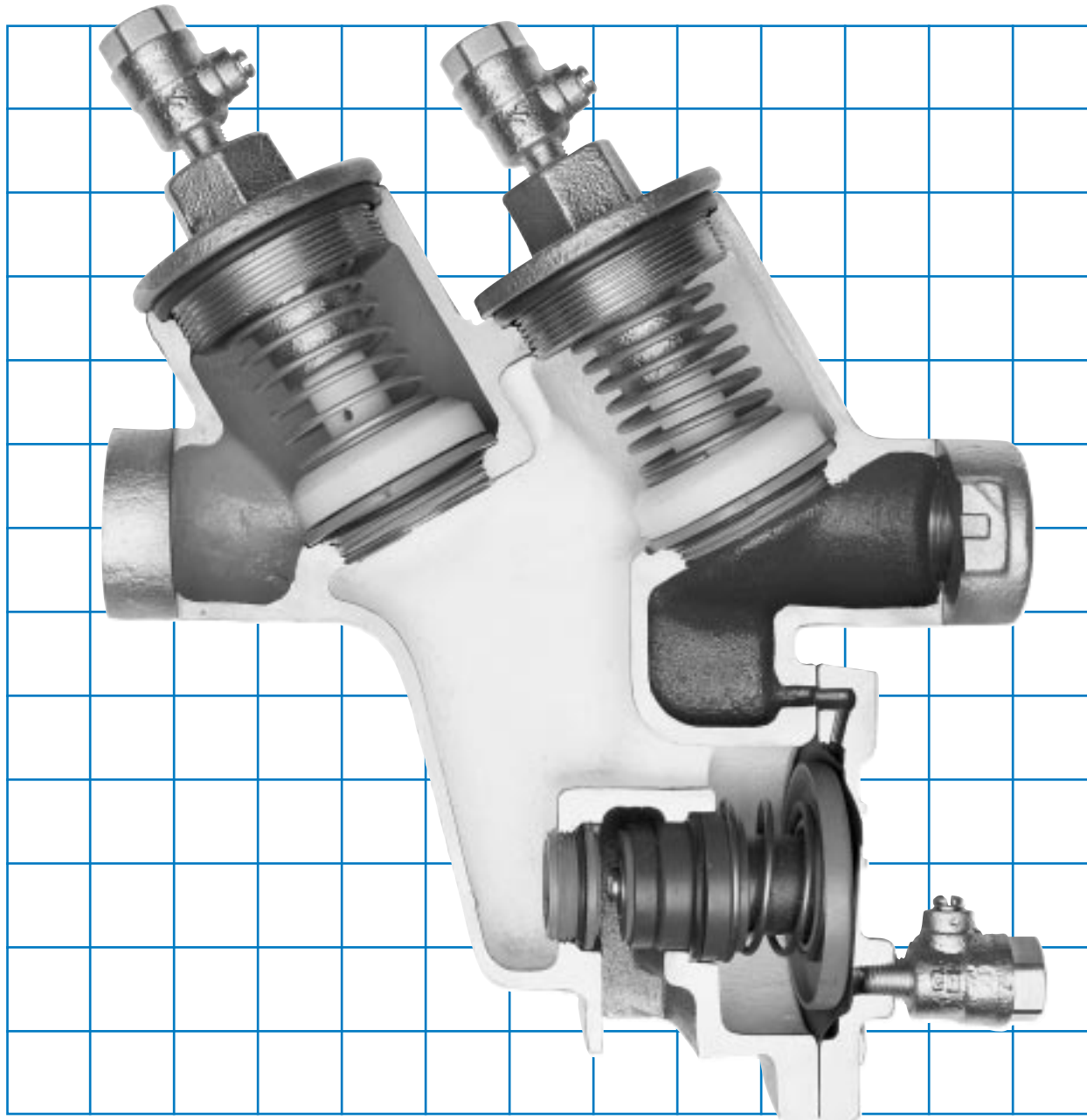




# MAINTENANCE MANUAL



## **REDUCED PRESSURE PRINCIPLE (RPZ) BACKFLOW PREVENTERS 1/4" - 10" AND REDUCED PRESSURE DETECTOR ASSEMBLY 3" - 10"**

---

---

# TABLE OF CONTENTS

## Reduced Pressure Principle Backflow Preventer 1/4" - 10" & Reduced Pressure Detector Assembly 3" - 10"

	<b>Section</b>	<b>Page</b>
<b>I</b>	Description and Operation . . . . .	.2
<b>II</b>	Installation . . . . .	.3
<b>III</b>	Trouble Shooting Guide . . . . .	.4
<b>IV</b>	Maintenance Instructions 1/4" - 2" . . . . .	.5
<b>V</b>	Maintenance Instructions 2-1/2" - 10" . . . . .	.6
<b>VI</b>	Testing Procedure 1/4" - 10" . . . . .	.7 - 10
<b>VII</b>	Part List 1/4" - 2" (Bronze Body) . . . . .	.11, 12
<b>VIII</b>	Parts List 1/4" - 1" (Stainless Steel Body) . . . . .	.13, 14
<b>IX</b>	Parts List 2-1/2" - 10" (Ductile Iron Body) . . . . .	.15 - 20
<b>X</b>	Parts List 3" - 10" RPDA . . . . .	.21 - 24
<b>XI</b>	Backflow Preventer Test Kits . . . . .	.26

# Reduced Pressure Principle Backflow Preventer

## I DESCRIPTION AND OPERATION

The RPZ device consists of two independently acting, spring loaded, poppet type check valves, together with a hydraulically dependent, mechanically independent pressure differential relief valve, located in the zone between the check valves. Two resilient seated shut-off valves and four test cocks complete the assembly.

During normal operation, the pressure drop across the first check valve into the "zone" area is approximately 7 PSI. The second check valve is lightly spring loaded

to provide a minimum pressure drop of 1 PSI across it. (See Fig. 1)

The relief valve operates on a differential pressure. Supply pressure on the upstream side of the first check valve acts against the diaphragm to close the relief valve during normal operation. In the event of back-pressure, the relief valve will open to maintain the pressure in the "zone" at least 2 PSI less than the inlet pressure.

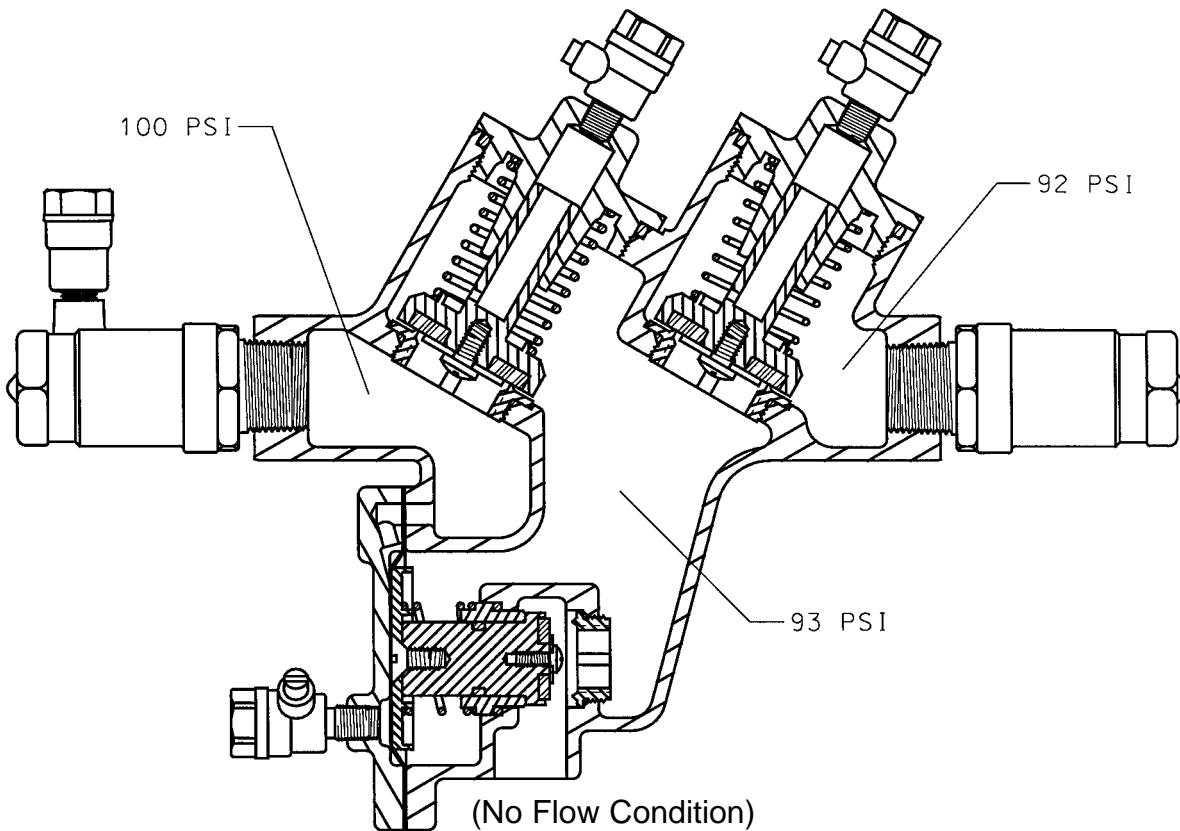


FIGURE 1

## REDUCED PRESSURE DETECTOR ASSEMBLY (RPDA)

The RPDA device consists of a mainline RPZ and a by-pass assembly consisting of an approved RPZ assembly and water meter. Each device is equipped with test cocks for periodic field testing and is normally supplied with inlet and outlet shut-off valves.

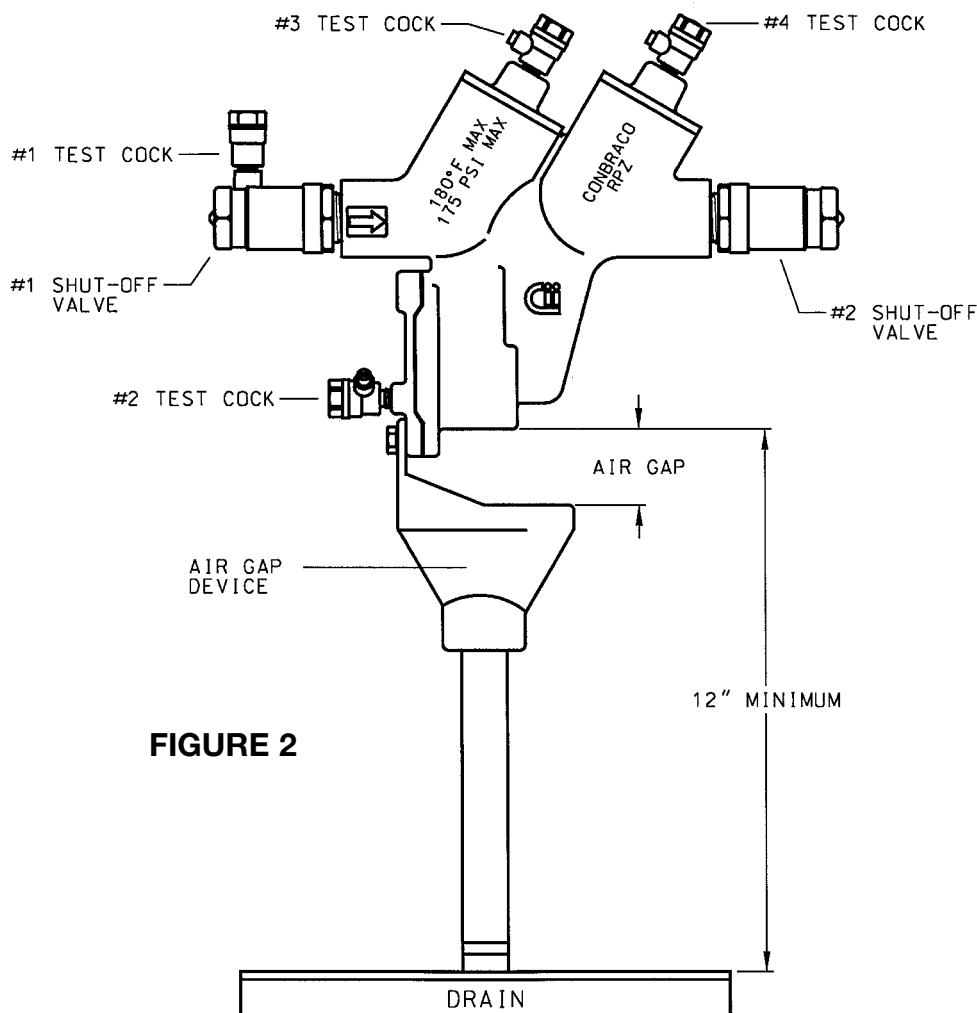
For information on operation, installation, trouble shooting & testing refer to Installation Instruction Booklet I503600 furnished with each RPDA unit. For maintenance instructions see pages 5 & 6. For parts list see pages 21 - 24.

## II INSTALLATION

- (a) The RPZ device must be installed in an accessible location to facilitate periodic field testing and maintenance.
- (b) The location selected should have adequate drainage for relief valve discharge. Drainage may be piped away, providing an approved air gap device is used (see Fig. 2). The device should never be placed where it may become submerged in standing water.
- (c) Flush all upstream piping thoroughly to remove foreign matter prior to installing the device.
- (d) Install the device in a horizontal position with adequate clearance from walls and/or obstructions, for testing and maintenance. A 12" to 30" clearance between the lower most portion of the device and flood grade or floor should be provided.
- (e) When shut-off valves are supplied separately, they should be installed with a test cock on the upstream side of the inlet shut-off valve.
- (f) A "Y" strainer can be installed just upstream of the RPZ assembly to eliminate any debris from entering the device and fouling the check and/or relief valve.
- (g) When installing the assembly, use pipe sealant on external threads only (if applicable).
- (h) Use wrench grips provided when installing (if applicable).
- (i) After installing the assembly, and with downstream or #2 shut-off valve closed, pressurize the RPZ device and bleed air through test cock #4. Then open #2 shut-off valve.

### NOTE:

**If water continues to drain from the relief valve, check the Trouble Shooting section for probable causes and solutions.**



### III TROUBLE SHOOTING GUIDE

SYMPTOM	CAUSE	CORRECTIVE ACTION
<p>1. Relief valve continuously discharges during no-flow condition.</p>	<p>a. #1 check valve fouled with debris.  b. #2 check valve fouled with debris coupled with a backpressure condition.  c. #1 check poppet stem not moving freely in guide (or #2 check poppet during a backpressure condition.)</p>	<p>a. Inspect and clean seat disc and seat.  b. Inspect and clean seat disc and seat.  c. Inspect for debris or deposit on poppet stem or guide.</p>
<p>2. Relief valve discharges continuously during flow and no-flow conditions.</p>	<p>a. Relief valve fouled with debris.  b. Damaged diaphragm (allows water to pass through from inlet to zone).  c. Sensing passage to inlet side of diaphragm plugged.  d. #1 check poppet stem not moving freely in poppet guide.</p>	<p>a. Inspect and clean relief valve seat disc and seat.  b. Replace diaphragm.  c. Inspect and clean passage in cover and body.  d. Inspect for debris or deposits on poppet stem or guide.</p>
<p>3. Relief valve discharges intermittently in a “spitting” action during no-flow condition.</p>	<p>a. Pressure fluctuations (water hammer) from supply.</p>	<p>a. Eliminate or reduce pressure fluctuations.</p>
<p>4. Relief valve does not open during field test No. 1.</p>	<p>a. #2 shut-off valve not closed completely.  b. Test equipment improperly installed.</p>	<p>a. Close #2 shut-off valve or inspect for possible through leakage.  b. Recheck test procedure.</p>
<p>5. #2 check valve fails to hold backpressure.</p>	<p>a. #2 shut-off valve not closed completely.  b. #2 check valve fouled with debris.  c. #2 check poppet stem not moving freely in guide.</p>	<p>a. Close #2 shut-off valve or inspect for possible through leakage.  b. Inspect and clean seat disc and seat.  c. Inspect for debris or deposits on poppet stem or guide.</p>
<p>6. Pressure differential across #1 check valve is low during field test No. 3 (does not meet 3 PSID minimum).</p>	<p>a. #1 check valve fouled with debris.  b. Upstream pressure fluctuations causing inaccurate gauge reading.  c. #1 check poppet stem not moving freely in guide.</p>	<p>a. Inspect and clean seat disc and seat.  b. Eliminate pressure fluctuations.  c. Inspect for debris or deposits on poppet stem or guide.</p>

---

---

## IV 1/4" - 2" MAINTENANCE INSTRUCTIONS

### A. Disassembly — Check Valves

1. Close #2 shut off valve, then close #1 shut-off valve.
2. Bleed pressure from the assembly by opening #2, #3, and #4 test cock.

#### CAUTION:

**Caps are spring loaded and should be removed carefully to avoid personal injury.**

3. Unscrew cap using hex head provided.
4. Remove spring and poppet assembly from the body.

### B. Disassembly — Check Valve Poppet

#### CAUTION:

**Do not use pliers or other tools which may damage or scratch the plastic stem.**

1. Holding the poppet assembly in one hand, remove screw and retaining washer.
2. Remove the seat disc.
3. All parts should be carefully inspected for any damage or excessive wear and thoroughly rinsed in clean water prior to reassembly. Replace worn parts as necessary.

### C. Assembly — Check Valve Poppet

1. Install new disc in poppet, secure disc with retaining washer and screw.

#### NOTE:

**Due to symmetry of the disc, the old disc may be turned over to obtain an effective seal.**

### D. Assembly — Check Valve

1. Install the poppet assembly into the body.
2. Install the spring (heavy spring, larger diameter wire, goes into #1 check valve) onto the poppet.
3. Apply a thin coat of synthetic based lubricant on cap O-Ring.
4. Guide cap over spring and poppet stem and tighten cap.

### E. Relief Valve Disassembly

1. Remove cover bolts, cover and diaphragm.
2. Grasp the diaphragm plate and pull the assembly straight out of the body.
3. Holding the relief valve assembly in one hand, remove the screw and retaining washer.
4. Remove the seat disc.
5. Turn the assembly over, keeping the spring compressed by holding down on the diaphragm plate, remove the screw.
6. Remove the diaphragm plate, spring and bushing from the R.V. stem.
7. Remove the O-Ring from the R.V. stem.
8. All parts should be carefully inspected for any damage or excessive wear and thoroughly rinsed in clean water prior to reassembly. Replace worn parts as necessary.

### F. Assembly — Relief Valve

1. Apply a thin coat of synthetic base lubricant on O-Rings before installing.
2. Install O-Ring onto R.V. stem.
3. Slide bushing over R.V. stem and position spring onto bushing.
4. Position diaphragm plate and compress spring, install screw into R.V. stem.
5. Turn the assembly over and install seat disc, retaining washer and screw.
6. Install O-Ring onto bushing.
7. Slide complete assembly into the body.
8. Position diaphragm over flange, install cover and tighten bolts evenly.
9. Open #1 shut-off valve & bleed air out of the unit through #2, #3 and #4 test cocks; then open #2 shut-off valve.
10. Test complete assembly to ensure proper operation.

---

---

## V 2-1/2" - 10" MAINTENANCE INSTRUCTIONS

### A. Disassembly — Check Valves

1. Close #2 shut off valve, then close #1 shut-off valve.
2. Bleed pressure from the assembly by opening #2, #3, and #4 test cock.
3. Remove cover bolts and cover.

#### NOTE:

**The spring load on the cover will be removed when the cover bolts are backed off approximately 3/8".**

4. Remove the complete check assembly straight out of the valve body being careful not to damage the seat ring.
5. The check valve seat is threaded into the body and may be removed at this time if necessary (the seat is bolted into the body on the 10" unit).
6. To remove the seat disc, remove the retaining plate nut (on the 8" & 10" units remove the retaining plate bolts) and retaining plate, remove disc.

#### WARNING:

**The check valve spring is held in compression by the stem nut on top. This nut should not be removed unless the spring requires replacement.**

### B. Assembly — Check Valves

1. Install seat disc in holder and secure with retaining plate and retaining nut or bolts as applicable.

#### NOTE:

**Due to the symmetry of the disc, the old disc may be turned over to obtain an effective seal.**

2. Install the check valve assembly into the body (assemble with the larger diameter spring into the first check valve).
3. Apply a thin coat of synthetic based lubricant on the cover O-Ring and place it into the groove around the lip of the check barrel. Being careful not to disturb O-Ring, install the cover and tighten the bolts evenly.

### C. Disassembly — Relief Valve

1. Remove cover bolts, cover and diaphragm.

#### NOTE:

**On the 8" & 10" units the diaphragm is an integral part of the relief valve assembly.**

2. Grasp the diaphragm plate and pull the assembly straight out of the body.
3. Holding the relief valve assembly in one hand, remove the screw and retaining washer.
4. Remove the seat disc.
5. Turn the assembly over, keeping the spring compressed by holding down on the diaphragm plate, remove the screw/bolt.
6. Remove the diaphragm plate(s), spring and bushing from the R.V. stem.
7. Remove the O-Ring from the R.V. stem.
8. All parts should be carefully inspected for any damage or excessive wear and thoroughly rinsed in clean water prior to reassembly. Replace worn parts as necessary.

### D. Assembly — Relief Valve

1. Apply a thin coat of synthetic base lubricant on O-Rings before installing.
2. Install O-Ring onto R.V. stem.
3. Slide bushing over R.V. stem and position spring onto bushing.
4. Position diaphragm plate(s) and compress spring, install screw into R.V. stem.
5. Turn the assembly over and install seat disc, retaining washer and screw.
6. Install O-Ring onto bushing.
7. Slide complete assembly into the body.
8. Position diaphragm over flange, install cover and tighten bolts evenly.
9. Open #1 shut-off valve & bleed air out of the unit through #2, #3 and #4 test cocks; then open #2 shut-off valve.
10. Test complete assembly to ensure proper operation.

---

---

## VI TESTING PROCEDURES

**IT'S IMPORTANT THAT THE RPZ BE TESTED PERIODICALLY IN COMPLIANCE WITH LOCAL CODES, BUT AT LEAST ONCE A YEAR OR MORE, AS SERVICE CONDITIONS WARRANT.**

### EQUIPMENT REQUIRED

Conbraco reduced pressure backflow preventer test kit (40-200-TK, 40-200-TKP, 40-200-TK5, or 40-200-TKRC).

### TEST NO. 1:

**NOTE: Test set-up is illustrated in Figure 3.**

**PROCEDURE 1 for use with 40-200-TK or 40-200-TKP Test Kit only. See procedure 2 for 40-200-TK5 or 40-200-TKRC.**

#### Purpose:

To test operation of the pressure differential relief valve.

#### Requirement:

The pressure differential relief valve must operate to maintain the "zone" between the two check valves at a minimum of 2 PSI less than the supply pressure.

#### PROCEDURE:

1. Bleed water through all four test cocks to flush any foreign material.

**NOTE:** Open test cock #2 very slowly to avoid accidental dumping of the relief valve.

2. Connect the "high" side hose to test cock #2. Connect the "low" side hose to test cock #3.
3. Open valves #1, #2, and #3.
4. Slowly open test cock #3 and bleed all air from gauge and hoses through the "vent" hose. With test cock #3 maintained in the open position, slowly open test cock #2 and bleed all air again through the "vent" hose. Close valve #3. Then close valve #2.

5. Close #2 shut-off valve.

6. Slowly open valve #3 until the differential gauge needle starts to drop.

**NOTE:** It is important that the differential gauge needle drops slowly. Maintain #3 at this position and observe the differential pressure reading at the moment the first discharge is noted from the relief valve.

7. Record this reading as the opening differential pressure of the relief valve and close valve #3.

### TEST NO. 2:

#### Purpose:

To test check valve #2 for tightness against reverse flow.

#### Requirement:

The check valve shall permit no through leakage in a direction reverse to normal flow under all conditions of a pressure differential.

#### PROCEDURE:

1. Maintain the #2 shut-off valve in the closed position (from Test No. 1).
2. Loosely attach the "vent" hose to test cock #4.
3. Bleed all air from the "vent" hose by opening valve #2.
4. Close valve #2 and tighten hose connection to test cock #4. Then open test cock #4.
5. Loosen the "low" side hose at test cock #3 slightly and re-establish the normal reduced pressure within the zone. Then retighten hose.
6. Open valve #2. If the differential pressure remains steady then check valve #2 is reported as "OK". If the differential pressure falls until the relief valve opens then check valve #2 is recorded as "leaking" and Test No. 3 cannot be completed.

### TEST NO. 3:

#### Purpose:

To test the static differential pressure across check valve #1.

#### Requirement:

The static differential pressure across check valve #1 must be a minimum of 3 PSI more than the opening differential pressure of the relief valve as recorded in Test No. 1.

#### PROCEDURE:

1. With the testing equipment installed as stated in Test No. 2, the static differential pressure across check valve #1 will be indicated on the gauge and should be recorded as such.

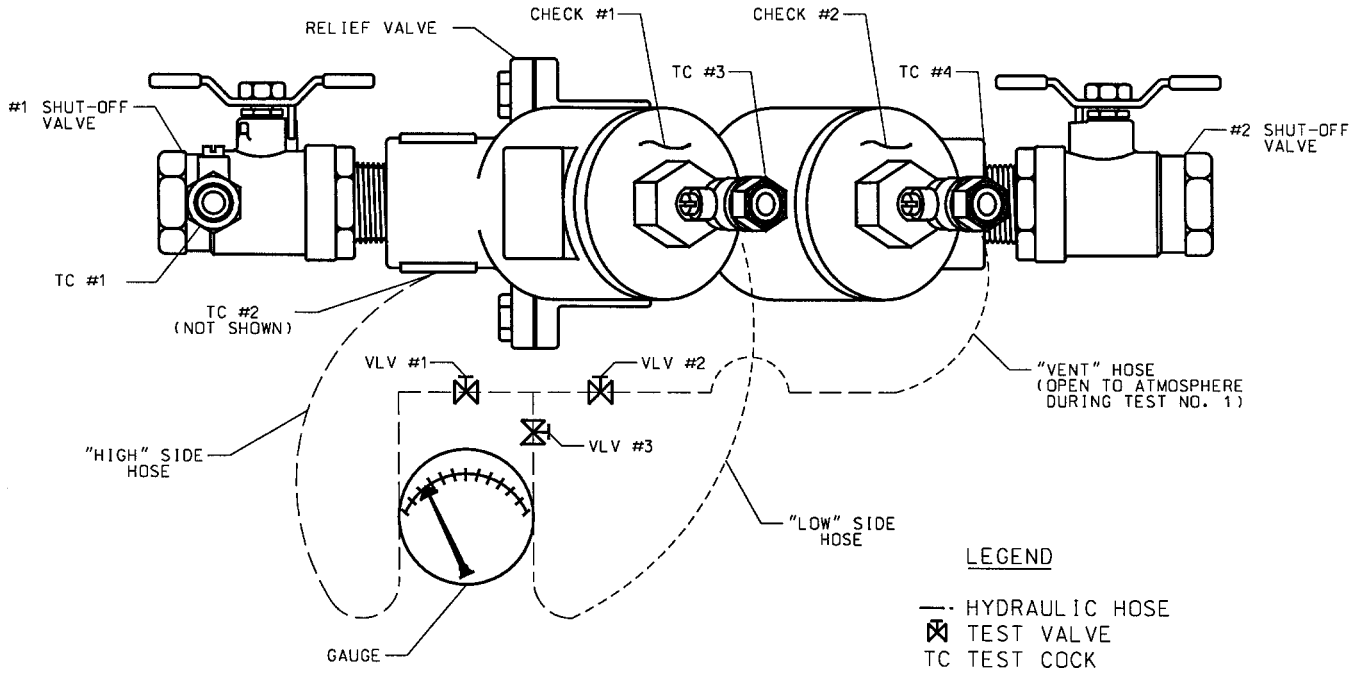
**NOTE:** Gauge needle should be steady and not falling.

#### RESTORE OPERATION:

Close all test cocks, open all needle-valves, open #2 shut-off valve and carefully remove all test equipment.

**NOTE:** Refer to Troubleshooting Guide in section III to resolve any problems incurred during field testing.

# CONBRACO REDUCED PRESSURE BACKFLOW PREVENTER



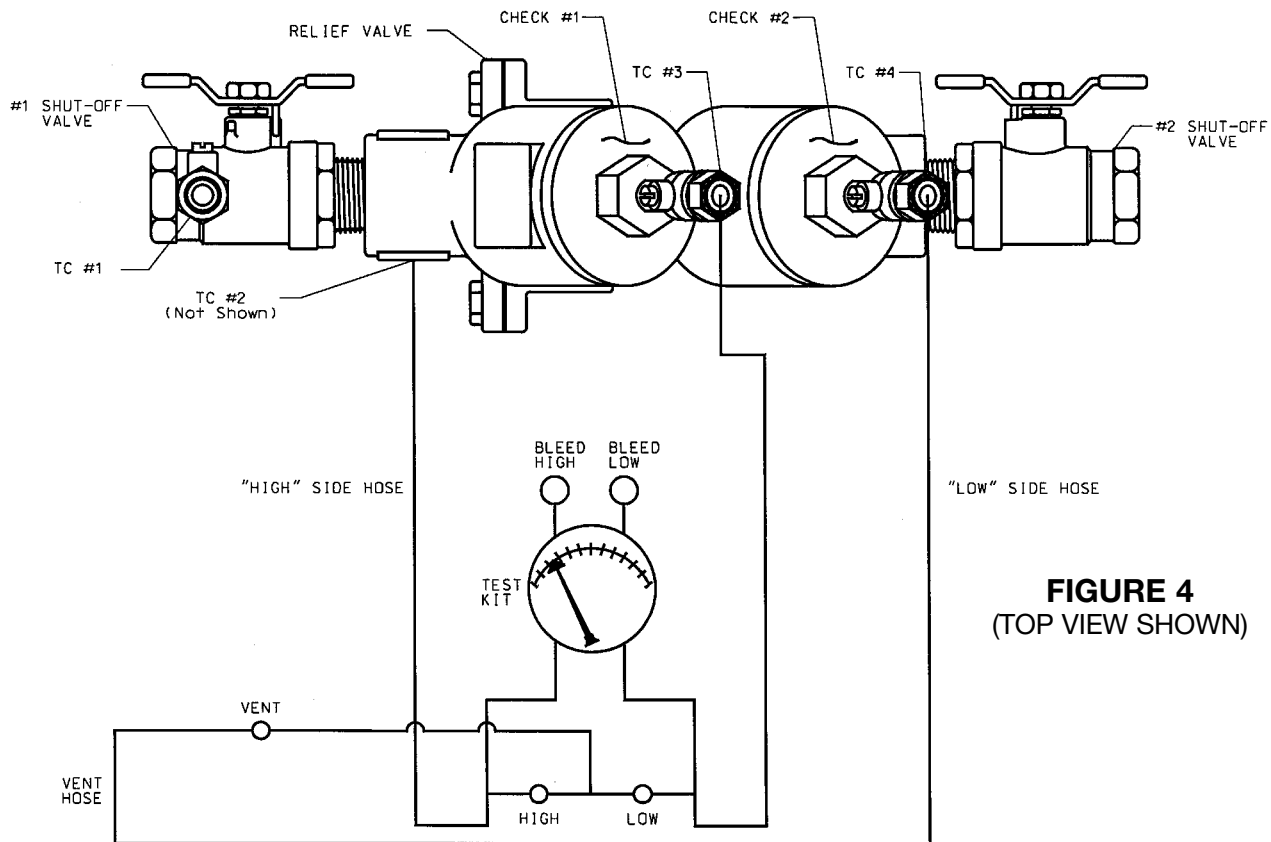
**FIGURE 3**  
(TOP VIEW SHOWN)

## PROCEDURE 2

### TEST PROCEDURE USING 40-200-TK5 or 40-200-TKRC TEST KIT

**NOTE: IT IS THE TESTER'S RESPONSIBILITY TO DETERMINE IF THIS PROCEDURE IS ACCEPTED BY LOCAL AUTHORITIES.**

# CONBRACO REDUCED PRESSURE BACKFLOW PREVENTER



**FIGURE 4**  
(TOP VIEW SHOWN)

### TEST SET UP

1. Obtain permission to shut off the water supply.
2. Determine the direction of flow.
3. Identify and install appropriate adapters in all 4 test cocks.
4. All test kit valves are closed.

**TEST NO. 1 - DOES THE DIFFERENTIAL PRESSURE RELIEF VALVE OPERATE TO MAINTAIN THE "ZONE" BETWEEN THE TWO CHECK VALVES AT LEAST 2 PSI LESS THAN THE SUPPLY PRESSURE.**

1. Open test cock 4 to establish flow through the RP. "Blow out" test cocks 1, 2 & 3.

**Note:** Open test cock 2 slowly to avoid accidental dumping of the relief valve. Close test cock 4.

2. Connect the red hose between test cock 2 and the high side (back, middle) connection on the test kit.

3. Connect the green hose between test cock 3 and the low side (back, right) connection on the test kit.
4. Slowly open test cock 3. Bleed the low side by opening the bleed low (top, right) valve.
5. Slowly open test cock 2. Bleed the high side by opening the bleed high (top, left) valve. Close the bleed high (top, left) valve.
6. After the gauge reaches full scale, close the bleed low (top, right) valve.
7. Close the No. 2 shutoff valve and observe the pressure drop across Check Valve 1. Should the pressure drop until the relief valve discharges continuously, check valve 1 is leaking and must be repaired before continuing.
8. Open the high (bottom, middle, red) valve.
9. Open the low (bottom, right, green) valve no more than one quarter (1/4) turn.

- 
- 
10. Watch the gauge drop slowly to the relief valve opening point - record the reading. (If the differential pressure does not drop to the relief valve opening point, close the high and low valves and go to step 12).
  11. Close the high and low valves and go to test No. 2.
  12. No. 2 shutoff valve may be leaking. Reopen and close No. 2 shutoff valve to attempt a better shutoff. Repeat steps 7 through 10. If the relief valve does not open, a by-pass hose is required. (Large leaks may require a garden hose).
  13. Attach a hose (not supplied with Test Kit) to test cock 1. Bleed hose by opening test cock 1. Close test cock 1.
  14. Connect the hose from test cock 1 to test cock 4.
  15. Open test cock 1 to pressurize the hose.
  16. Slowly open test cock 4. Repeat steps 8 through 10. If the relief valve does not open, the leaky No. 2 shutoff valve must be repaired.

**TEST NO. 2 - IS CHECK VALVE 2 PRESSURE TIGHT AGAINST BACK PRESSURE.**

**NO BYPASS HOSE USED IN TEST 1.**

1. Connect the black hose to vent (back, left) connection on the test kit.
2. Bleed vent hose by opening the high (bottom, middle, red) and vent (bottom, left, black) valves. Close the vent valve.
3. Attach the vent hose to test cock 4.
4. Open test cock 4.
5. Open the bleed low (top, right) valve allowing the gauge to reach full scale. Close the bleed low valve.
6. Open the vent (bottom, left, black) valve.
7. If the differential pressure stabilizes above the relief valve opening point check valve 2 is recorded as "tight". (Proceed to test No. 3). If the reading falls to the relief valve opening point, check valve 2 is recorded as "leaking" and Test No. 3 cannot be completed.

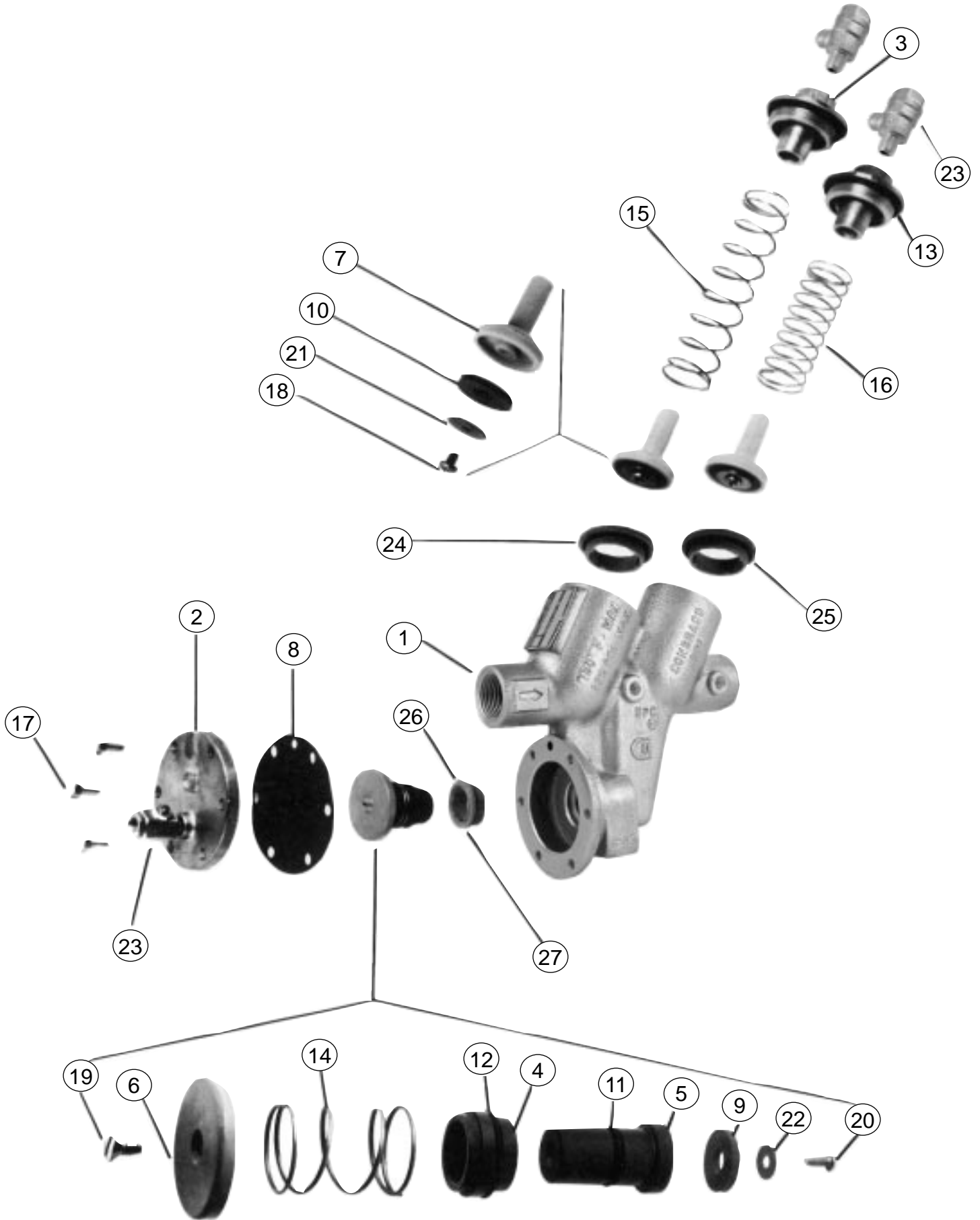
**BYPASS HOSE USED IN TEST 1.**

1. Leave the bypass hose connected between test cocks 1 and 4.
2. Leave test cocks 1 and 4 open.
3. Open the bleed low (top, right) valve allowing the gauge to reach full scale. Close the bleed low valve.
4. If the differential pressure stabilizes above the relief valve opening point, check valve 2 is recorded as "tight". (Proceed to Test No. 3). If the reading falls to the relief valve opening point, check valve 2 is recorded as "leaking" and Test No. 3 cannot be completed.

**TEST NO. 3 - IS THE STATIC PRESSURE DROP ACROSS CHECK VALVE 1 MAINTAINED AT LEAST 3 PSI ABOVE THE RELIEF VALVE OPENING POINT.**

1. Open the bleed low (top, right) valve allowing the gauge to reach full scale. Close the bleed low valve.
2. Allow the gauge reading to stabilize. Record this reading as the static pressure drops across check valve 1.
3. Close all test cocks. Open the No. 2 shutoff valve. Remove all test equipment. Drain test kit.

VII PARTS LISTING 1/4" - 2" (Bronze)



# 40-200

## Reduced Pressure Principle Backflow Preventer

ITEM NO.	DESCRIPTION	QUANTITY	1/4", 3/8", 1/2"	3/4" & 1"	1 1/4", 1 1/2", 2"
1	Body	1	Consult Factory	Consult Factory	Consult Factory
2	R.V. Cover	1	F-3017	F-2982	F-2985
3	Cap	2	F-3231	F-3108	F-3115
4	R.V. Bushing	1	I-4507	I-4240	I-4257
5	R.V. Stem	1	G-3296	G-3212	G-3213
6	Diaphragm Plate	1	E-2222	D-2506	D-2516
7	Poppet	2	K-3409	K-3362	K-3367
8	R.V. Diaphragm	1	D-2632	D-2505	D-2515
9	R.V. Seat Disc	1	D-2631	D-2829	D-2514
10	Check Seat Disc	2	D-2630	D-2503	D-2508
11	Stem O-Ring	1	D-2628	D-2502	D-2513
12	Bushing O-Ring	1	D-2629	D-2501	D-2512
13	Check Cap O-Ring	2	D-2046	D-2500	D-2510
14	R.V. Spring	1	A-1795	A-1698	A-1702
15	1st Check Spring	1	A-1797	A-1699	A-1703
16	2nd Check Spring	1	A-1794	A-1700	A-1701
17	Hex Head Bolt	6(*4) (**7)	B-1793	B-1751	B-1754
18	Screw	2	B-1837	B-1750	B-1750
19	Screw	1	B-1749	B-1749	B-1753
20	Screw	1	B-1837	B-1748	B-1753
21	Retaining Washer	2	E-2223	D-2499	D-2509
22	Retaining Washer	1	E-2224	D-2498	D-2499
23	Test Cock	3	78-257-01	78-257-01	78-258-01
24	Check Seat	2	L-5152	L-4864	L-4866
25	Check O-Ring	2	D-3086	D-2274	D-2565
26	R.V. Seat	1	L-5153	L-4863	L-4867
27	R.V. O-Ring	1	D-3087	D-2168	D-2274

### Repair Kits\*\*\*

#### Major Repair Kit

4, 5, 6, 7 (2), 8, 9, 10 (2), 11, 12,  
13 (2), 14, 18 (2), 19, 20, 21 (2), 22,  
24 (2), 25 (2), 26, 27

40-003-A1

40-004-A1

40-007-A1

#### Check Valve Repair Kit

7, 10, 13, 18, 21, 24, 25

40-003-A2

40-004-A2

40-007-A2

#### Relief Valve Repair Kit

4, 5, 6, 8, 9, 11, 12, 14, 19, 20, 22,  
26, 27

40-003-A3

40-004-A3

40-007-A3

#### Rubber Repair Kit

8, 9, 10 (2), 11, 12, 13 (2), 25 (2), 27

40-003-A4

40-004-A4

40-007-A4

#### Replaceable Seat Kit

24 (2), 25 (2), 26, 27

40-003-A7

40-004-A7

40-007-A7

### Accessories

Air Gap Drain

40-200-XA

40-200-X1

40-200-X1

Reduced Pressure Backflow Preventer Test Kit 40-200-TK, 40-200-TKP, 40-200-TK5, or 40-200-TKRC (All Sizes)

\* 1/4", 3/8" & 1/2" SIZES ONLY

\*\* 1-1/4", 1-1/2" & 2" SIZES ONLY

\*\*\* For repair kits without replaceable seat components, replace part number suffix designation "A" with "O".  
Example: Major Repair Kit part number 40-004-01



# 40-200S

## Stainless Steel Reduced Pressure Principle Backflow Preventer

ITEM NO.	DESCRIPTION	QUANTITY	PART NO.	
			1/4", 3/8", 1/2"	3/4" & 1"
1	Body	1	Consult Factory	Consult Factory
2	R.V. Cover	1	F-3056-05	F-3048-05
3	Cap	2	F-3232-05	F-3233-05
4	R.V. Bushing	1	I-5149-15	I-5105-15
5	R.V. Stem	1	G-3296-00	G-3212-00
6	Diaphragm Plate	1	E-2222-00	D-2506-00
7	Poppet	2	K-3409-00	K-3362-00
8	R.V. Diaphragm	1	D-3088-00	D-3047-00
9	R.V. Seat Disc	1	D-2631-00	D-2829-00
10	Check Seat Disc	2	D-2630-00	D-2503-00
11	Stem O-Ring	1	D-3084-00	D-3051-00
12	Bushing O-Ring	1	D-3085-00	D-3044-00
13	Check Cap O-Ring	2	D-3083-00	D-3052-00
14	R.V. Spring	1	A-1795-00	A-1698-00
15	1st Check Spring	1	A-1797-00	A-1699-00
16	2nd Check Spring	1	A-1794-00	A-1700-00
17	Hex Head Bolt	4(*6)	B-1793-00	B-1751-00
18	Screw	2	B-1837-00	B-1748-00
19	Screw	1	B-1749-00	B-1749-00
20	Screw	1	B-1837-00	B-1750-00
21	Retaining Washer	2	E-2223-00	D-2499-00
22	Retaining Washer	1	E-2224-00	D-2498-00
23	Test Cock	3	78-930-01	78-930-01
24	Check Seat	2	L-5152-00	L-4864-00
25	Check O-Ring	2	D-3086-00	D-3046-00
26	R.V. Seat	1	L-5153-00	L-4863-00
27	R.V. O-Ring	1	D-3087-00	D-3045-00

### Repair Kits

#### Major Repair Kit

4, 5, 6, 7 (2), 8, 9, 10 (2), 11, 12,  
13 (2), 14, 18 (2), 19, 20, 21 (2), 22,  
24 (2), 25 (2), 26, 27

40-003-A1S      40-004-A1S

#### Check Valve Repair Kit

7, 10, 13, 18, 21, 24, 25

40-003-A2S      40-004-A2S

#### Relief Valve Repair Kit

4, 5, 6, 8, 9, 11, 12, 14, 19, 20, 22,  
26, 27

40-003-A3S      40-004-A3S

#### Rubber Repair Kit

8, 9, 10 (2), 11, 12, 13 (2), 25 (2), 27

40-003-A4S      40-004-A4S

#### Replaceable Seat Kit

24 (2), 25 (2), 26, 27

40-003-A7S      40-004-A7S

### Accessories

Air Gap Drain

40-200-XA      40-200-X1

Reduced Pressure Backflow Preventer Test Kit

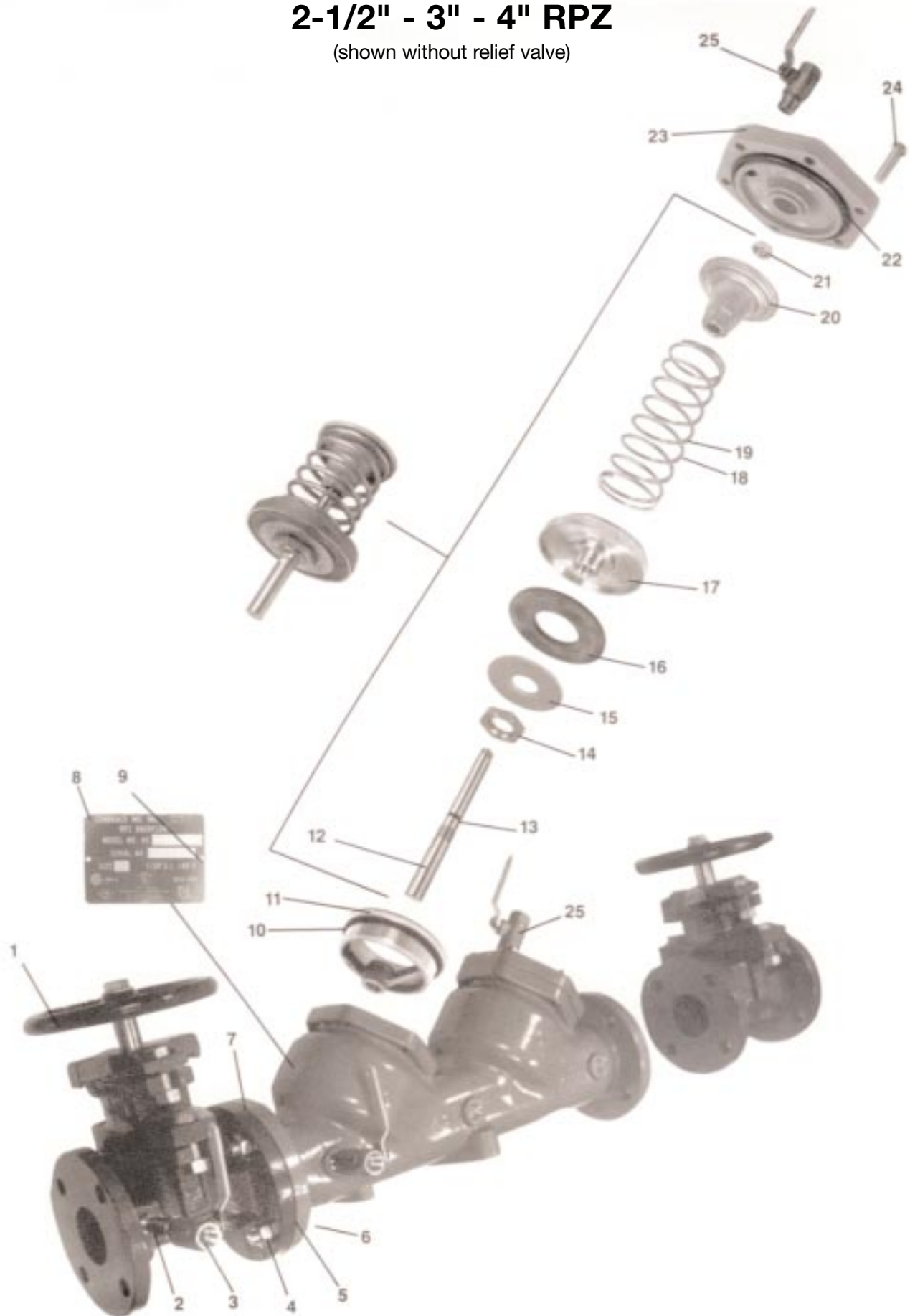
40-200-TK, 40-200-TKP, 40-200-TK5, or 40-200-TKRC  
(All Sizes)

\* 3/4", 1" SIZES ONLY

IX PARTS LISTING 2-1/2" - 10" (Ductile Iron)

**2-1/2" - 3" - 4" RPZ**

(shown without relief valve)



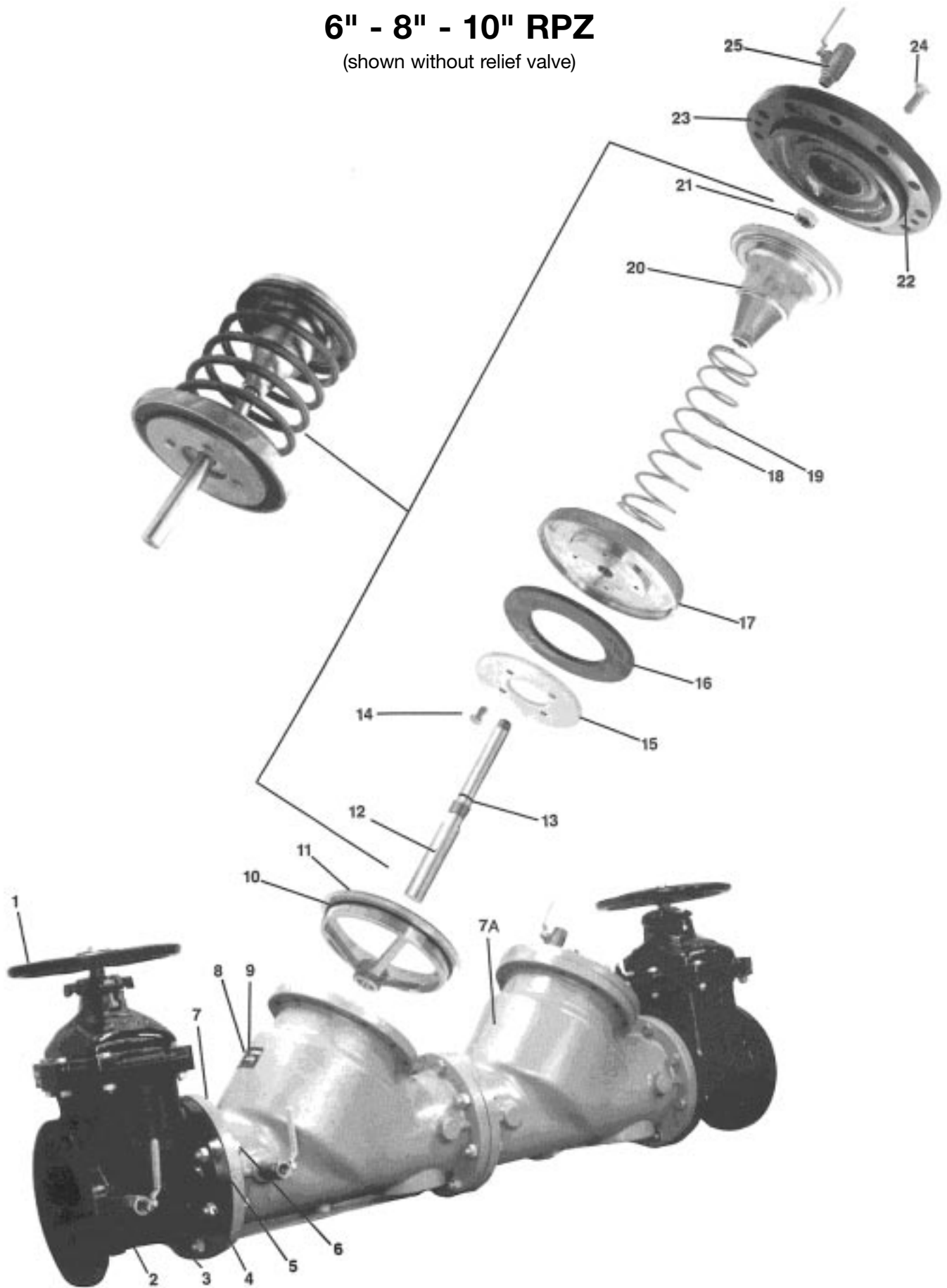
# RPZ Parts List

ITEM NO.	DESCRIPTION	QUANTITY	PART NO.		
			2-1/2"	3"	4"
1	Shut-Off Valve (OS&Y)	2	W-6789-00	W-6790-00	W-6824-00
1	Shut-Off Valve (NRS)	2	W-6785-00	W-6786-00	W-6743-00
2	Brass Nipple	1	K-3406-00	K-3406-00	K-3406-00
3	Test Cock	1	70-103-01	70-103-01	70-103-01
4	Flange Nut	*	C-1691-00	C-1691-00	C-1691-00
5	Ring Gasket	2	D-2583-00	D-2584-00	D-2582-00
6	Flange Bolt	*	B-1804-00	B-1804-00	B-1828-00
7	Body	1	Q-4528-19	Q-4529-19	Q-4532-19
8	Nameplate	1	I-4406-00	I-4406-00	I-4406-00
9	Drive Screw	2	I-2613-00	I-2613-00	I-2613-00
10	C.V. Seat O-Ring	2	D-2567-00	D-2567-00	D-2573-00
11	C.V. Seat	2	L-4637-05	L-4637-05	L-4640-05
12	C.V. Stem	2	G-3239-06	G-3239-06	G-3242-06
13	C.V. Stem O-Ring	2	D-2561-00	D-2561-00	D-2561-00
14	Retainer Nut	2	C-1756-00	C-1756-00	C-1756-00
15	Retainer Washer	2	E-2199-00	E-2199-00	E-2204-00
16	C.V. Seat Disc	2	D-2560-00	D-2560-00	D-2572-00
17	Seat Disc Holder	2	F-3000-05	F-3000-05	F-3001-05
18	1st Check Spring	1	A-1740-00	A-1740-00	A-1743-00
19	2nd Check Spring	1	A-1741-00	A-1741-00	A-1744-00
20	Spring Retainer	2	E-2198-05	E-2198-05	E-2202-05
21	Jam Nut	2	C-1589-05	C-1589-05	C-1589-05
22	Cap O-Ring	2	D-2566-00	D-2566-00	D-2574-00
23	C.V. Cap	2	Q-4530-19	Q-4530-19	Q-4533-19
24	Cap Bolt	12	B-1797-00	B-1797-00	B-1801-00
25	Test Cock	3	70-803-01	70-803-01	70-803-01

\* 2-1/2" & 3" QTY = 8 / 4" QTY = 16

# 6" - 8" - 10" RPZ

(shown without relief valve)



# RPZ Parts List

ITEM NO.	DESCRIPTION	QUANTITY	PART NO.		
			6"	8"	10"
1	Shut-Off Valve (OS&Y)	2	W-6825-00	W-6826-00	W-6859-00
1	Shut-Off Valve (NRS)	2	W-6744-00	W-6827-00	W-6858-00
2	Brass Nipple	1	K-3412-40	K-3412-00	K-3412-00
3	Test Cock	1	70-104-01	70-104-01	70-104-01
4	Flange Nut	*	C-1759-00	C-1759-00	C-1793-00
5	Ring Gasket	3	D-2579-00	D-2590-00	D-2653-00
6	Flange Bolt	**	B-1829-00	B-1857-00	B-1858-00
6A	Stud	2	N/A	N/A	B-2036-00
7	Body	1	Q-4538-19	Q-4543-19	Q-4572-19
7A	Body	1	Q-4591-19	Q-4593-19	Q-4595-19
8	Nameplate	1	I-4406-00	I-4406-00	I-4406-00
9	Drive Screw	2	I-2613-00	I-2613-00	I-2613-00
10	C.V. Seat O-Ring	2	D-2567-00	D-2589-00	D-2588-00
11	C.V. Seat	2	L-4644-05	L-4653-05	L-4759-05
12	C.V. Stem	2	G-3246-00	G-3273-00	G-3305-00
13	C.V. Stem O-Ring	2	D-2578-00	D-2587-00	D-2587-00
14	Retainer Nut/Bolt	***	C-1760-00	C-1754-00	C-1754-00
15	Retainer Washer	2	E-2205-00	E-2208-00	E-2229-00
16	C.V. Seat Disc	2	D-2575-00	D-2586-00	D-2649-00
17	Seat Disc Holder	2	F-3002-05	F-3008-05	F-3019-05
18	1st Check Spring	1	A-1745-00	A-1747-00	A-1778-00
19	2nd Check Spring	1	A-1746-00	A-1748-00	A-1779-00
20	Spring Retainer	2	E-2203-05	E-2207-05	E-2228-05
21	Jam Nut	2	C-1706-00	*C-1763-05	*C-1763-05
22	Cap O-Ring	2	D-2577-00	D-2588-00	D-2651-00
23	C.V. Cap	2	Q-4537-19	Q-4545-19	Q-4574-19
24	Cap Bolt	****	B-1800-00	B-1690-00	B-1881-00
25	Test Cock	3	70-804-01	70-804-01	70-804-01
	Seat Bolt	12	N/A	N/A	B-1849-00

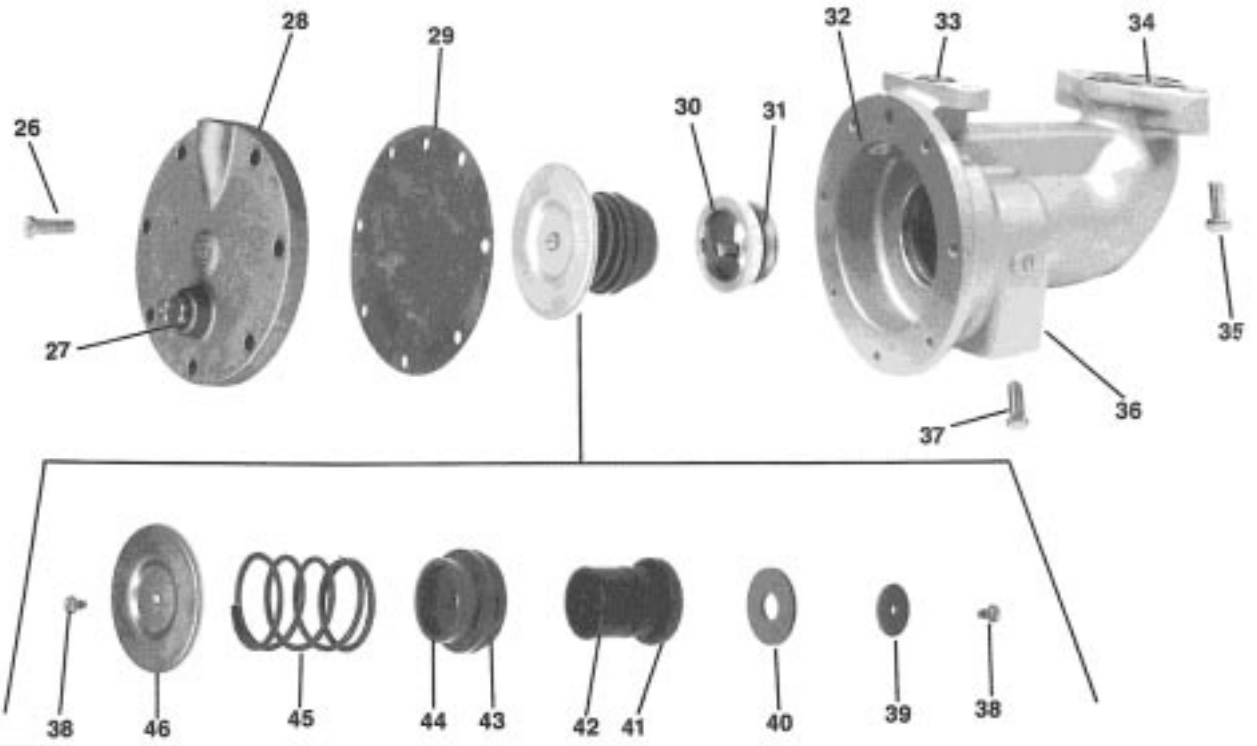
\* 6" & 8" QTY = 24 / 10" QTY = 38

\*\* 6" & 8" QTY = 24 / 10" QTY = 34

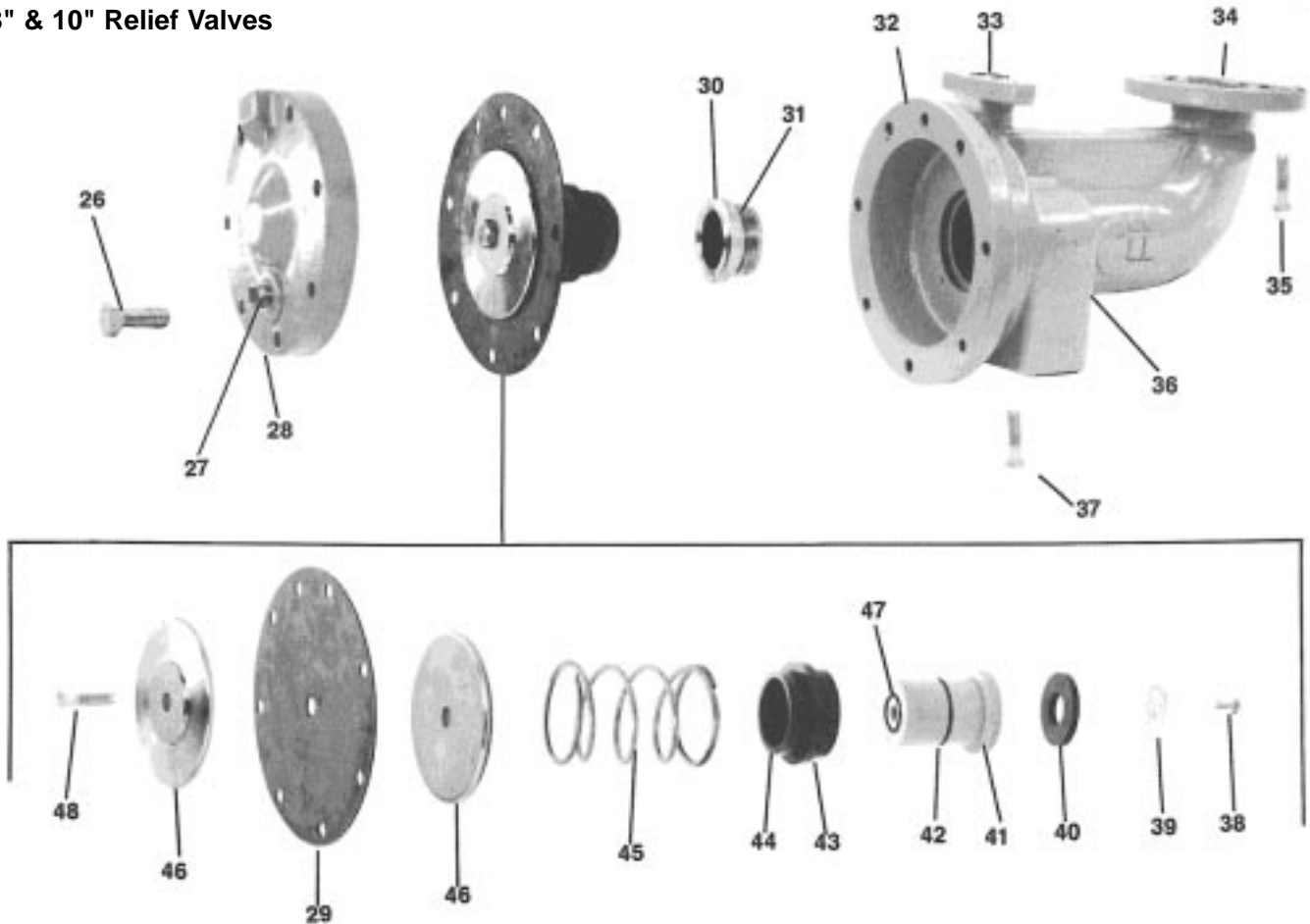
\*\*\* 6" QTY = 2 / 8" & 10" QTY = 8

\*\*\*\* 6" QTY = 12 / 8" & 10" QTY = 24

## 2-1/2" - 6" Relief Valves



## 8" & 10" Relief Valves



# RPZ Parts List

ITEM NO.	DESCRIPTION	QUANTITY	PART NO.	QUANTITY	PART NO.
			<u>2-1/2" - 6"</u>		<u>8", 10"</u>
26	Relief Valve Cover Bolt	7	B-1796-00	7	B-1703-00
27	1/2 NPT Plug	1	K-3008-00	N/A	N/A
27	3/4 NPT Plug	N/A	N/A	1	K-3010-00
28	Relief Valve Cover	1	Q-4531-05	1	Q-4542-19
29	Relief Valve Diaphragm	1	D-2564-00	1	D-2591-00
30	Relief Valve Seat Ring	1	L-4638-05	1	L-4651-05
31	Relief Valve Seat Ring O-Ring	1	D-2568-00	1	D-2593-00
32	Relief Valve Body	1	Q-4535-05	1	Q-4541-19
33	Small Relief Valve O-Ring	1	D-2570-00	1	D-2186-00
34	Large Relief Valve O-Ring	1	D-2571-00	1	D-2304-00
35	Relief Valve Flange Bolt	2	B-1800-00	4	B-1669-00
36	1/4 NPT Plug	1	K-3019-00	1	K-3019-00
37	Relief Valve Flange Bolt	2	B-1792-00	2	B-1669-00
38	Pan Head Screw	2	B-1753-00	1	B-1856-00
39	Relief Valve Seat Washer	1	E-2200-00	1	E-2210-00
40	Relief Valve Seat Disc	1	D-2563-00	1	D-2595-00
41	Relief Valve Stem	1	G-3240-00	1	G-3274-05
42	Relief Valve Stem O-Ring	1	D-2565-00	1	D-2594-00
43	Relief Valve Bushing O-Ring	1	D-2565-00	1	D-2592-00
44	Relief Valve Bushing	1	L-4639-15	1	L-4652-15
45	Relief Valve Spring	1	A-1742-00	1	A-1749-00
46	Diaphragm Plate	1	E-2201-00	2	E-2209-05
47	Stem Face O-Ring	N/A	N/A	1	D-2106-00
48	Diaphragm Bolt	N/A	N/A	1	B-1800-00

**Repair Kits**

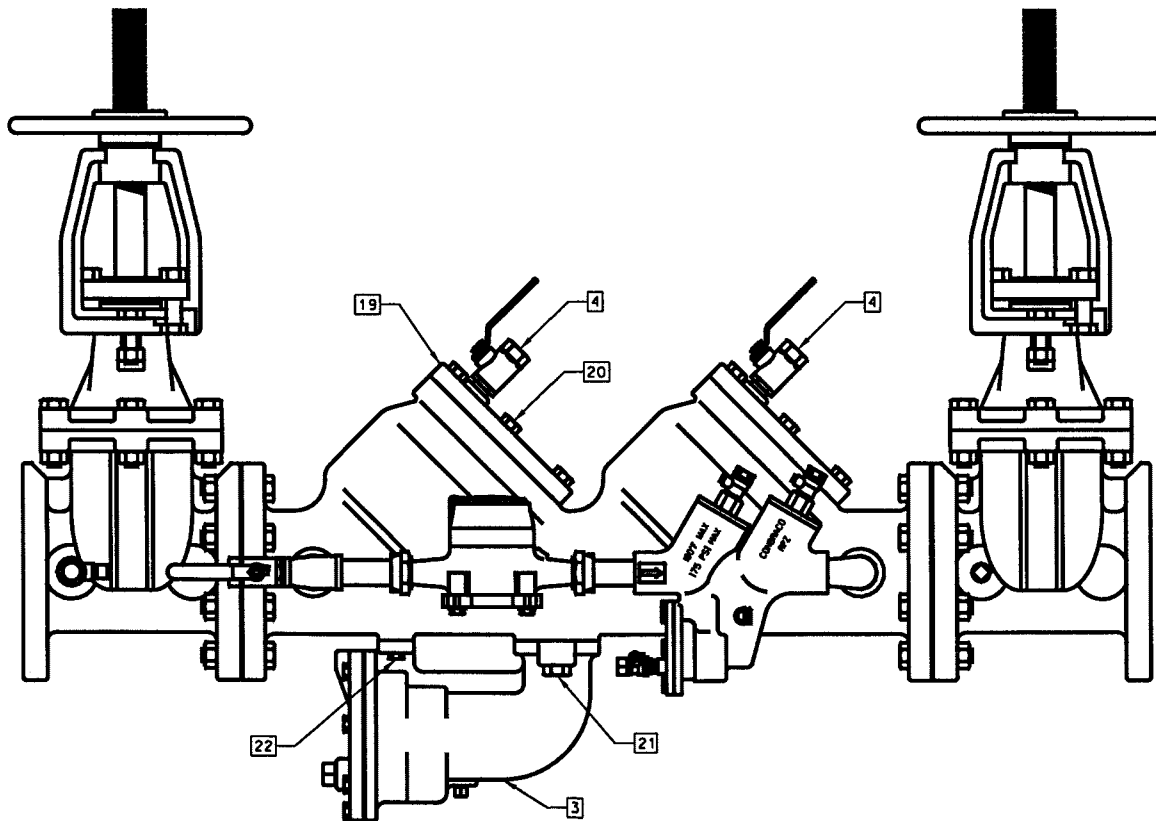
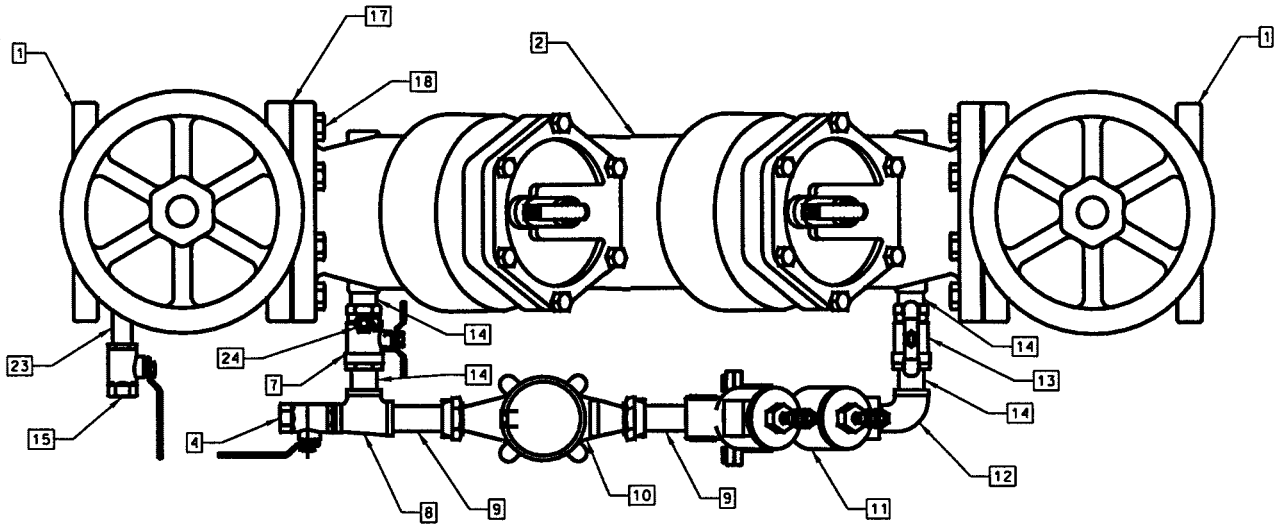
	<b>PART NO.</b>				
	<u>2-1/2", 3"</u>	<u>4"</u>	<u>6"</u>	<u>8"</u>	<u>10"</u>
<u>1st Check Valve Repair Kit</u> 12, 13, 14, 15, 16, 17, 18, 20, 21, 22	40-009-01	40-00A-01	40-00C-01	40-00E-01	40-00G-01
<u>2nd Check Valve Repair Kit</u> 12, 13, 14, 15, 16, 17, 19, 20, 21, 22	40-009-02	40-00A-02	40-00C-02	40-00E-02	40-00G-02
<u>Seat Repair Kit</u> 10, 11, 22	40-009-03	40-00A-03	40-00C-03	40-00E-03	40-00G-03
<u>Rubber Repair Kit</u> 10, 13, 16, 22	40-009-04	40-00A-04	40-00C-04	40-00E-04	40-00G-04
<u>Relief Valve Repair Kit</u> 29, 30, 31, 33, 34, 38, 39, 40, 41, 42, 43, 44, 45, 46, (47, 48)*	40-009-05	40-00A-05	40-00C-05	40-00E-05	40-00G-05
<u>Relief Valve Rubber Repair Kit</u> 29, 31, 33, 34, 40, 42, 43, (47)*	40-009-06	40-00A-06	40-00C-06	40-00E-06	40-00G-06

\*8" &amp; 10" Only

**NOTES:**

- 1. USE P/N W-7062-00 FOR METER IN CUBIC FEET REGISTER.  
USE P/N W-7094-00 FOR METER IN GALLONS REGISTER.
- 2. N/S - NOT SHOWN

**3" - 4"**



# RPDA Parts List

ITEM NO.	DESCRIPTION	QUANTITY	PART NO.	
			3"	4"
1	Gate Valve (OS&Y)	2	W679000	W682400
2	RPDA Body	1	Q493419	Q480719
3	Relief Valve Ass'y	1	W672905	W672905
4	Test Cock	3	7080301	7080301
N/S	1st Chk Poppet Ass'y	1	W671705	W673005
N/S	2nd Chk Poppet Ass'y	1	W728905	W710005
7	By-Pass Shut-Off Valve	1	7B10401	7B10401
8	Tee, Reducing	1	K350600	K350600
9	Coupling, Water Meter	2	K350500	K350500
10	Water Meter in Cubic Feet	1	W706200	W706200
10	Water Meter in Gallons	1	W709400	W709400
11	3/4" RPZ	1	W739005	W739005
12	Elbow, Street	*	K350200	K350200
13	By-Pass Shut-Off Valve	1	7B10431	7B10431
14	Nipple, Close	4	K337000	K337000
15	Test Cock	1	7010301	7010301
N/S	Flange Nut	**	C143800	C143800
17	Flange Gasket	2	D258400	D258200
18	Flange Bolt	**	B180400	B182800
19	Cap	2	Q453019	Q453319
20	Cap Bolt	12	B179700	B180100
21	Relief Valve Flange Bolt (Lg.)	2	B180000	B180000
22	Relief Valve Flange Bolt (Sm.)	2	B179200	B179200
23	Nipple	1	K340600	K340600
24	Test Cock	1	7825701	7825701
N/S	Nipple, 3/4" x 4-1/2" (Lg.)	1	K360500	N/A
N/S	Elbow, 3/4" - 90°	1	K350100	N/A
N/S	Cap O-Ring	2	D256600	D257400
N/S	Seat O-Ring	2	D256700	D257300
N/S	Relief Valve O-Ring (Sm.)	1	D257000	D257000
N/S	Relief Valve O-Ring (Lg.)	1	D257100	D257100
N/S	Nameplate	1	I499100	I499100
N/S	Nameplate Tack	2	I529400	I529400
N/S	Instruction Booklet	1	I503600	I503600
N/S	Check Valve Seat	2	L463705	L464005

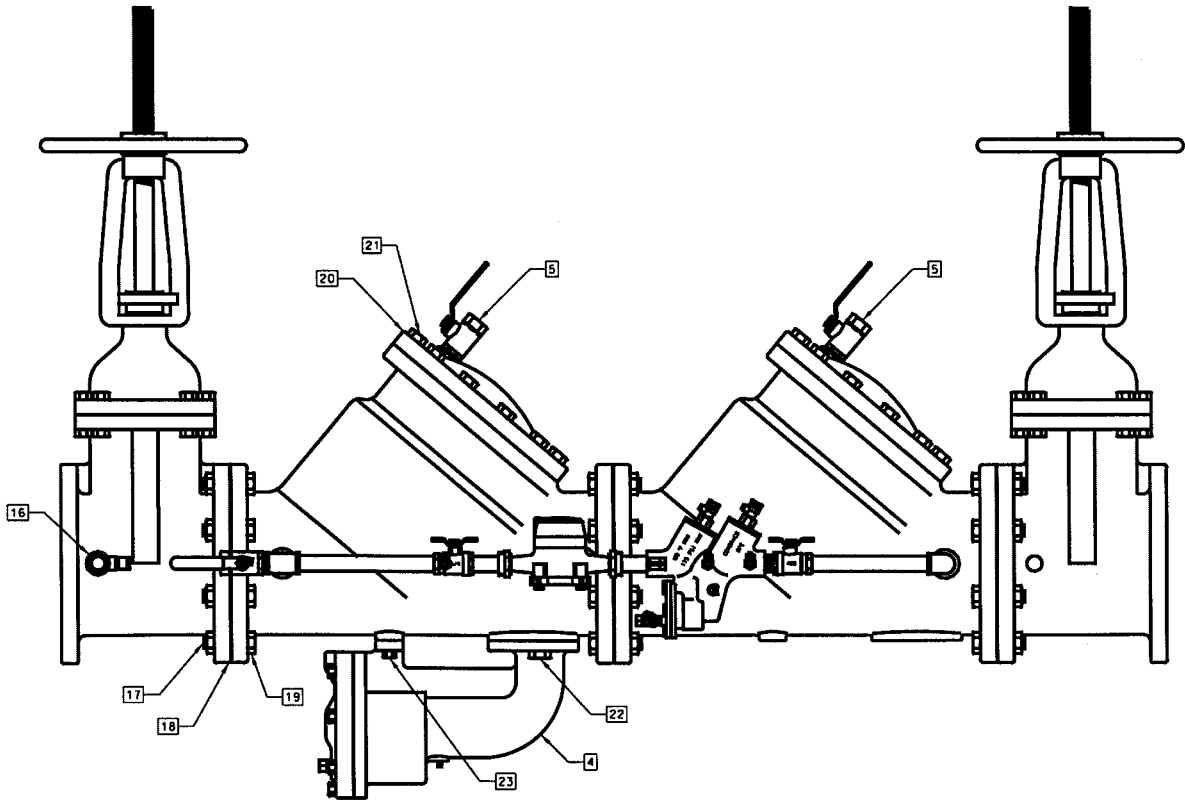
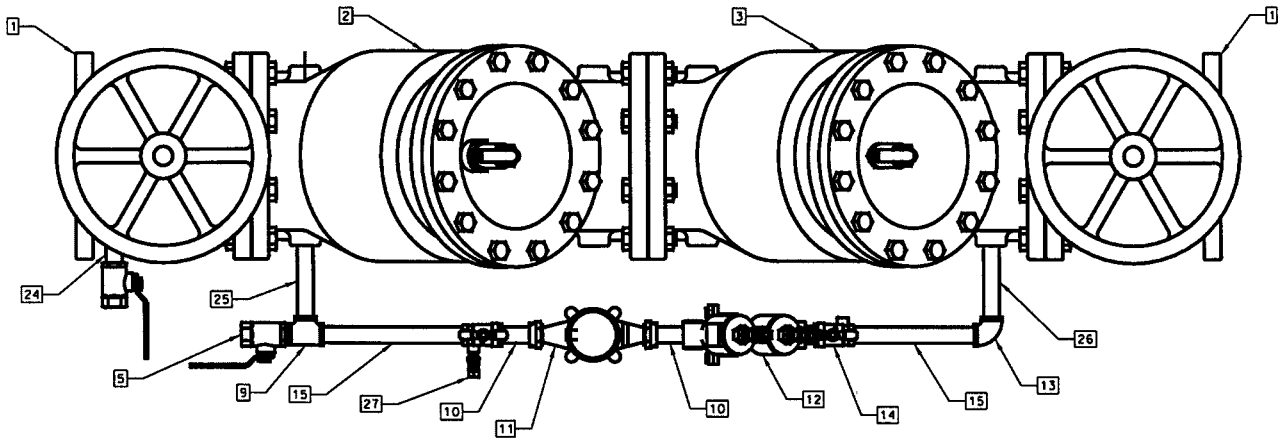
\* 3" QTY = 3 / 4" QTY = 1

\*\* 3" QTY = 8 / 4" QTY = 16

**NOTES:**

1. USE P/N W-7062-00 FOR METER IN CUBIC FEET REGISTER.  
USE P/N W-7094-00 FOR METER IN GALLONS REGISTER.
2. N/S - NOT SHOWN

**6" - 10"**



# RPDA Parts List

ITEM NO.	DESCRIPTION	QUANTITY	PART NO.		
			6"	8"	10"
1	Gate Valve (OS&Y)	2	W682500	W682600	W685900
2	Body (1st Check)	1	Q453819	Q454319	Q457219
3	Body (2nd Check)	1	Q459119	Q459319	Q459519
4	Relief Valve Ass'y	1	W672905	W674805	W674805
5	Test Cock	3	7080401	7080401	7080401
N/S	1st Chk Poppet Ass'y	1	W674105	W674505	W685605
N/S	2nd Chk Poppet Ass'y	1	W720605	W720705	W724905
8	By-Pass Shut-Off Valve	1	7B10401	7B10401	7B10401
9	Tee, 3/4" NPT	1	K351100	K351100	K351100
10	Coupling, Water Meter	2	K350500	K350500	K350500
11	Water Meter in Cubic Feet	1	W706200	W706200	W706200
11	Water Meter in Gallons	1	W709400	W709400	W709400
12	3/4" RPZ	1	W739005	W739005	W739005
13	Elbow, 3/4" NPT	1	K350100	K350100	K350100
14	By-Pass Shut-Off Valve	1	7B80431	7B80431	7B80431
15	Nipple, 3/4" NPT	2	K350900	K352700	K356000
16	Test Cock	1	7010401	7010401	7010401
17	Flange Nut	*	C175900	C175900	C179300
18	Flange Gasket	3	D257900	D259000	D265300
19	Flange Bolt	**	B182900	B185700	B185800
20	Cap	2	Q453719	Q454519	Q457419
21	Cap Bolt	***	B180000	B169000	B188100
22	Relief Valve Flange Bolt (Lg.)	****	B180000	B166900	B166900
23	Relief Valve Flange Bolt (Sm.)	2	B179200	B166900	B166900
24	Nipple, 3/4" NPT	1	K341200	K341200	K341200
25	Nipple, 3/4" x 5-1/2" (Lg.)	1	K350900	K350900	K350900
26	Nipple, 3/4" NPT	1	K350900	K350900	K355900
27	Test Cock	1	7825701	7825701	7825701
N/S	Elbow, 3/4" - 90°	1	K350100	K350100	K350100
N/S	Cap O-Ring	2	D257700	D258800	D265100
N/S	Seat O-Ring	2	D257600	D258900	D258800
N/S	Relief Valve O-Ring (Sm.)	1	D257000	D218600	D218600
N/S	Relief Valve O-Ring (Lg.)	1	D257100	D230400	D230400
N/S	Nameplate	1	I499100	I499100	I499100
N/S	Nameplate Tack	2	I529400	I529400	I529400
N/S	Instruction Booklet	1	I503600	I503600	I503600
N/S	Check Valve Seat	2	L464405	L465305	L475905
N/S	Stud	2	N/A	N/A	B203600
N/S	Seat Bolt	12	N/A	N/A	B184900

\* 6" & 8" QTY = 24 / 10" QTY = 38

\*\* 6" & 8" QTY = 24 / 10" QTY = 34

\*\*\* 6" QTY = 12 / 8" & 10" QTY = 24

\*\*\*\* 6" QTY = 2 / 8" & 10" QTY = 4

# BACKFLOW PREVENTER TEST KITS

## DESCRIPTION

The Conbraco Backflow Preventer Test Kits are compact, lightweight and portable testing devices. They come equipped with a gauge, hoses and all required adapter fittings. Also included is a flexible or adjustable strap for hanging the gauge, laminated test procedures and a molded plastic carrying case with foam inserts.

### DIFFERENTIAL PRESSURE GAUGE TEST KIT 40-200-TK

This is a three valve test kit used for testing all DCV, RPZ, PVB & SVB backflow preventers.

The gauge is a differential pressure type with a dual scale of 0-15 psid/0-100kPa differential pressure range with a  $\pm 2\%$  accuracy (full scale).

### 40-200-TK5

This five valve kit is used for testing all DCV, RPZ, PVB & SVB backflow preventers.

The five valve test kit is similar to the three valve kit except it has an additional two valves that make it possible to bleed lines without disconnecting hoses. It also features a line pressure gauge in addition to the differential pressure gauge, a thermoplastic gauge body and adjustable nylon strap.

### 40-200-TKRC (ALL RPZ, DCV, PVB & SVB)

The test kit is identical to the 40-200-TK5 except it is for non-potable water. The test kit is color-coded, with a purple dial that matches reclaimed water lines in industrial, irrigation and fire service applications.

MODEL	APPLICATION	WT./100 (lbs)
40-200-TK	ALL DCV, RPZ, PVB & SVB	780
*40-200-TK5	ALL DCV, RPZ, PVB & SVB	650
*40-200-TKRC	ALL DCV, RPZ, PVB & SVB	650

\*Thermoplastic gauge body







**CUSTOMER SERVICE AND SALES DEPARTMENTS**  
**P.O. Box 247 • Matthews, NC 28106**  
**Phone: 704-841-6000 • Fax: 704-841-6020**

			<b>E/Mail Address</b>	<b>Phone</b>	<b>Fax</b>
<b>Southeast Region</b>	<b>B. Lynch &amp; Associates</b>	Florida	sales@blynchandassociates.com	813-901-0992	813-901-8403
	<b>Valves &amp; Fittings, Inc.</b>	Georgia/Alabama	sales@valves-fittings.com	770-483-3057	770-483-3110
	<b>Pro Marketing, Inc.</b>	North Carolina/South Carolina/Tennessee-East	sales@promarketinginc.net	864-578-4334	864-578-4889
	<b>Mid South Marketing, Inc.</b>	Virginia/Maryland/Washington, D.C./WV-East	midsouth7@aol.com	804-749-8712	804-749-8717
<b>Southern Region</b>	<b>Southern Marketing Group</b>	MS/TN-West/AR/Bowie Cty.-TX	SMG49@bellsouth.net	901-547-0042	901-547-0035
	<b>AVC Mechanical Sales, Inc</b>	Oklahoma/Texas-North	valvesales@avale.com	817-649-2229	817-649-2225
	<b>Knox &amp; Associates</b>	Texas-South/Louisiana	knox1@pdq.net	713-462-7766	713-690-6228
<b>Midwestern Region</b>	<b>HEBCO, Inc.</b>	Kansas/Missouri-West	chuckHEBCO@aol.com	913-491-0797	913-491-5126
	<b>New Tech Marketing, Inc.</b>	IL/WI-East/IN-North/MI-Upper Peninsula/IA-River Counties	ntm12@mcleodusa.net	630-378-4300	630-378-0343
	<b>New Tech Marketing, Inc.</b>	Eastern Missouri/Southern Illinois	ntm112@aol.com	618-394-0329	618-394-0427
	<b>L.J. Whitfill &amp; Associates</b>	Kentucky/Indiana-South/Ohio-South	whitfillas@msn.com	502-459-4545	502-459-9944
	<b>V.E. Sales Co., Inc.</b>	Michigan (Except Upper Peninsula)	tomv@vesalesinc.com	586-774-7760	586-774-1490
	<b>Northstar Valve &amp; Fitting, Inc.</b>	Minnesota/North & South Dakota/Wisconsin-West	northstarvalve@qwest.net	952-937-0108	952-937-0803
	<b>Willco, Inc.</b>	Nebraska/Iowa (Except River Counties)	bill@willcoinc.com	402-573-7000	402-573-7371
	<b>Morrissey Associates, Inc.</b>	Ohio-North/Pennsylvania-West/West Virginia-West	sales@morrisseyassoc.com	330-538-0406	330-538-0410
<b>Western Region</b>	<b>Pioneer Sales</b>	California-North	info@pioneersalesrep.com	916-388-0865	916-388-0867
	<b>Specification Sales</b>	California-South	specsales@verizonmail.com	909-594-7088	909-594-2798
	<b>Marshall-Rodeno Associated</b>	CO/WY/MT/ID-SE/UT/NV-NE/NM/EI Paso-TX	trodeno@marshall-rodeno.com	303-575-6701	303-575-6706
	<b>J.P. Harris &amp; Associates, Inc.</b>	Washington/Oregon/Idaho-North West/Alaska	jim@jpharrisassoc.com	360-944-8457	360-944-8459
	<b>Layden Valve Sales &amp; Solutions</b>	Hawaii	will@laydenvalve.com	808-456-3331	808-455-1064
	<b>Southwestern Mechanical Sales Co.</b>	Arizona/Nevada-SW Las Vegas/Clark County/Nevada	sales@swmech.com sales@swmech.com	480-813-1313 702-368-2561	480-813-2286 702-368-1784
<b>Northeast Region</b>	<b>Urell, Inc.</b>	Massachusetts/New England States	conbraco@urell.com	617-923-9500	617-926-9414
	<b>McMahon Marketing, Inc.</b>	New York-Upstate/New York-West	sales@mcMahonmarketing.com	518-792-3350	518-792-3351
	<b>Continuous Sales Corporation</b>	New York-East/New Jersey-North	csc07@aol.com	516-248-5177	516-248-5187
	<b>J.A. Layden Co.</b>	Pennsylvania-East/Delaware/New Jersey-South	sales@jalayden.com	610-353-2311	610-359-1299
	<b>Keith Engle &amp; Associates</b>	OEM accounts	keith.engle@worldnet.att.net	610-827-9560	610-827-9561
<b>Canada</b>	<b>Conbraco Industries, Canada</b>	160 Pennsylvania Ave., Unit 3, Concord, Ontario L4K 4A9	conbraco.canada@conbraco.com	905-761-6161	905-761-6666
	<b>Barclay Sales Ltd.</b>	British Columbia	mail@barclaysales.com	604-945-1010	604-945-3030
	<b>Dynamic Agencies, Ltd.</b>	Saskatchewan	doug.dynamicage@sk.sympatico.ca	306-343-1901	306-343-1901
	<b>Tom Beggs Agencies Ltd.</b>	Manitoba/NW Ontario	TBA@MB.SYMPATICO.CA	204-953-1900	204-774-6915
	<b>Task Controls, Inc.</b>	Ontario	taskcontrols@on.aibn.com	416-291-3004	416-754-3481
	<b>Agences J. Pierre Sylvain, Inc.</b>	Quebec	agencespsylvain@videotron.ca	450-655-9588	450-641-2737
	<b>Kern Industries, Ltd.</b>	Alberta-North	kernind@telusplanet.net	780-451-2056	780-454-6687
	<b>J. Levandier Sales, Inc.</b>	Nova Scotia, New Brunswick, Prince Edward Island	jlssales@istar.ca	506-858-1615	506-858-1084
	<b>Smith Agencies</b>	Newfoundland	smithagencies@roadrunner.nf.net	709-364-8856	709-747-9414
	<b>Key to the North Sales Agency, Inc.</b>	Ontario-North	heatsales@sympatico.ca	705-524-6714	705-566-0148
<b>Pelco Sales</b>	Eastern-Ontario/Ottawa	pelco@cyberus.ca	613-839-0114	613-839-0115	
<b>Int'l./ Puerto Rico</b>	<b>Rafael Rodriguez Barril, Inc.</b>	Puerto Rico	raulir@rrbarril.com	787-759-8680	787-759-8986
	<b>Conbraco International Limited</b>	Manchester, England	sales@conbraco.co.uk	+44-161-908-2340	+44-161-908-2359

**For Representatives And Distributors In Your International Area**  
**Please Contact The Closest Conbraco Industries International Office.**

Conway, SC • Matthews, NC • Pageland, SC • **Customer Service 1-704-841-6000** • www.conbraco.com