

SPECIFICATIONS

GENERAL SPECIFICATIONS

The backflow preventer shall be a Dual Check Valve type consisting of two independent and internally-loaded check valves. Each check valve shall be drip-tight in the normal direction of flow and shall permit no leakage in the direction reverse to normal flow under all conditions of pressure differential.

The backflow preventer shall be suitable for **supply pressure up to 175 psig and water temperature from 33 to 180°F.**

The backflow preventer shall meet the requirements of the following standards: **ASSE 1024 and CSA B64.6.**

CONBRACO SPECIFICATIONS

The Apollo 4N-300 Series Dual Check Valve backflow preventer shall prevent backflow by either backpressure or backsiphonage from a cross-connection between potable water lines and substances that are objectionable, but not a health-hazard.

The unit shall consist of two mechanically independent, spring loaded, poppet type check valve modules that are removable. Each poppet assembly is guided and spring-loaded against the seat by a spring retainer. Poppet assemblies, springs, seats, spring retainers, and o-rings shall be fully interchangeable.

All parts shall be made of corrosion resistant materials.

The backflow preventer shall be suitable for supply pressure up to **175 psig and water temperature from 33 to 180°F.**

The backflow preventer shall be approved

Dual Check Valve

Sizes $\frac{3}{8}$ ", $\frac{1}{2}$ ", $\frac{3}{4}$ ", 1"



FEATURES

- **Low pressure loss**
- **Independently-acting check valves**
- **Compact and lightweight**
- **Corrosion resistant**
- **Replaceable check modules**
- **Available in standard and swivel types**
- **Available in rough chrome finish ($\frac{3}{8}$ " size)**
- **Maximum working pressure 175 psi**



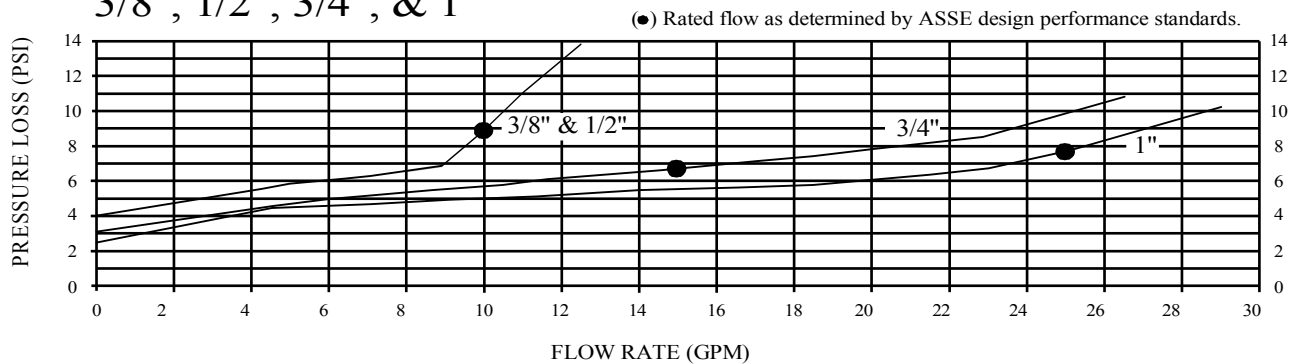
APPROVALS

The 4N-300 Series Dual Check Valve is approved under ASSE 1024 and CSA B64.6.



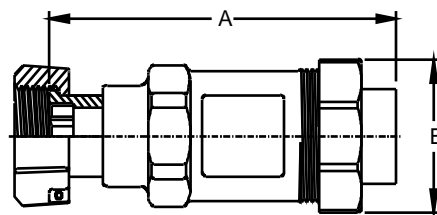
FLOW CURVES

4N-300 SERIES DUAL CHECK 3/8", 1/2", 3/4", & 1"

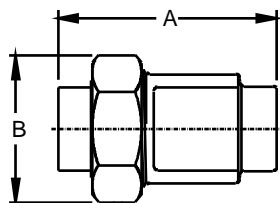


DIMENSIONS (in.) - WEIGHTS (lbs.)

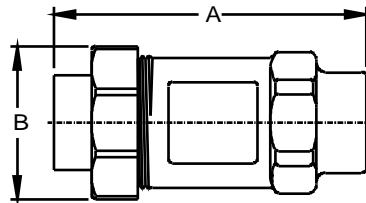
Size	A	B	Wt.
3/8" & 1/2"	3.32	1.88	.70
3/4"	4.41	2	1.40
3/4" Meter	5.35	2	1.65
1"	4.55	2	1.40



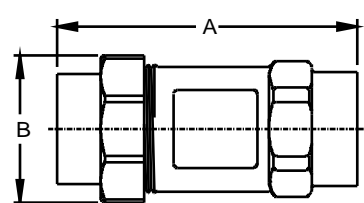
3/4" Meter Swivel x 3/4" NPT



3/8" & 1/2"



3/4"



1"

MATERIALS

Union Tail Piece	Brass
Union Nut	Brass
Seats, Spring Retainers, Poppets	Glass-filled Noryl® (3/8" & 1/2")
Seats, Spring Retainers, Poppets	Unfilled Acetal (3/4" & 1")
Springs	Stainless Steel
Seat Discs	Buna-N
Body	Bronze, ASTM B584

Ordering Numbers

4N-3A2-2A	3/8" FNPT X 3/8" FNPT
4N-3A2-2AC	3/8" FNPT X 3/8" FNPT (Rough Chrome Finish)
4N-3A3-3A	1/2" FNPT X 1/2" FNPT
4N-3A4-4A	3/4" FNPT X 3/4" FNPT
4N-3S5-4A	3/4" Meter (1-11 1/2 NPSM) Swivel Inlet X 3/4" FNPT Outlet
4N-3A5-5A	1" FNPT X 1" FNPT