



88-100 Series

Carbon Steel ANSI Class 150 Flanged Ball Valve

ANSI Class 150 Flanged Ends, 285 psig WOG, Cold Non-Shock. 150 psig Saturated Steam.

Vacuum Service to 29 inches Hg.

Federal Specification: WW-V-35C, Type: II, Composition: CS, Style: 3.

FEATURES (1/2" to 1")

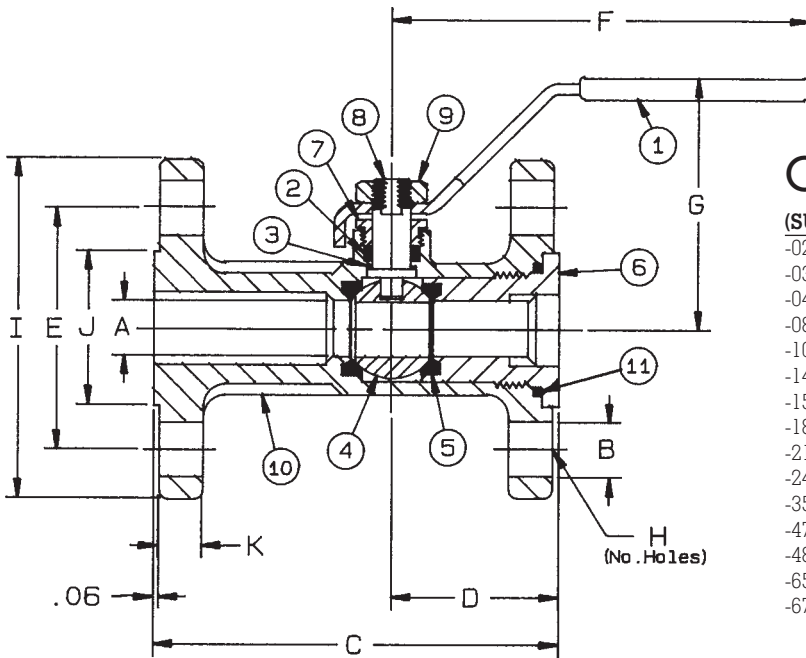
- Investment cast body
- Adjustable packing gland
- RPTFE seats and seals
- (-24) Certified to API standard 607, 4th Edition
- Positive shut-off
- Unibody construction
- Corrosion resistant
- Blow-out-proof stem design
- Field repairable
- Nitride corrosion protection
- Actuator mounting provisions

STANDARD MATERIAL LIST

1. Lever and grip	Steel, zinc plated w/vinyl	7. Packing gland	A108-CS
2. Stem packing	RPTFE	8. Stem	A108-CS
3. Stem bearing	RPTFE	9. Lever nut	Steel, zinc plated
4. Ball	A108-CS chrome plated	10. Body	A216-WCB
5. Seat (2)	RPTFE	11. Body seal	PTFE
6. Retainer	A108-CS		

VARIATIONS AVAILABLE:

88-140 Series (316 SS Ball & Stem)



OPTIONS AVAILABLE:

(SUFFIX)	OPTION	SIZES
-02-	Stem Grounded	1/2" to 1"
-03-	1-1/4" CS Stem Extension	1/2" to 1"
-04-	2-1/4" CS Stem Extension	1/2" to 1"
-08-	90° Reversed Stem	1/2" to 1"
-10-	SS Lever & Nut	1/2" to 1"
-14-	Side Vented Ball (Uni-Directional)	1/2" to 1"
-15-	Wheel Handle, Steel	1/2" to 1"
-18-	Plain Yellow Grip	1/2" to 1"
-21-	UHMWPE Trim (Non-PTFE)	1/2" to 1"
-24-	Graphite Packing	1/2" to 1"
-35-	VTFE Trim	1/2" to 1"
-47-	SS Oval Latch-Lock Handle & Nut	1/2" to 1"
-48-	SS Oval Handle (No Latch) & Nut	1/2" to 1"
-65-	Multifill Seats & Graphite Packing	1/2" to 1"
-67-	Cleaned For Industrial Gas - CS Valves	1/2" to 1"

Contact factory for actuator mounting dimensions.

**For Pressure/Temperature Ratings,
Refer to Page M-7, Graph No. 1**

CARBON STEEL ANSI CLASS 150 FLANGED BALL VALVE (1/2" to 1")

NUMBER	SIZE	A	B	C	D	E	F	G	H	I	J	K	Wt.
88-103-01	1/2"	.50	.62	4.25	1.87	2.37	4.37	2.56	4	3.50	1.38	.43	3.2
88-104-01	3/4"	.62	.62	4.62	1.91	2.75	4.87	2.93	4	3.88	1.69	.50	4.5
88-105-01	1"	.87	.62	5.00	1.94	3.12	4.87	3.12	4	4.25	2.00	.50	6.1