



87A-400 Series

Alloy 20 ANSI Class 150 Flanged Standard Port Ball Valve - 1-1/2" through 2"

STANDARDS COMPLIANCE

Refer to page D-A

STANDARD FEATURES

Refer to page D-A

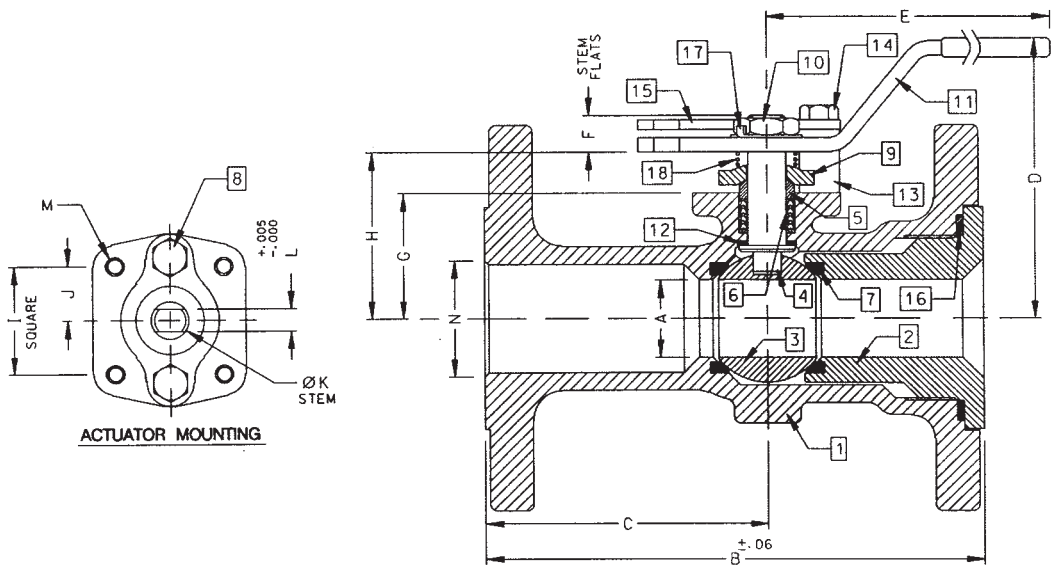
MATERIALS OF CONSTRUCTION

| Description | Material |
|----------------------|-------------------------------|
| 1. Body | ASTM A351 CN7M |
| 2. Retainer | ASTM B473 (UNS N08020) |
| 3. Ball | ASTM B473 (UNS N08020) |
| 4. Stem | ASTM B473 (UNS N08020) |
| 5. Packing Gland | ASTM A276 Type 316 |
| 6. Stem Seals | PTFE |
| 7. Seats | RPTFE |
| 8. Gland Screws | ASTM A193 B8 Class 1 |
| 9. Gland Plate | 302 or 304 SS |
| 10. Stem Nut | 316 SS |
| 11. Lever | 302 or 304 SS with Vinyl Grip |
| 12. Stem Bearing | RPTFE |
| 13. Stop | ASTM A276 Type 316 |
| 14. Stop Screw | 18-8 SS |
| 15. Lock Plate | 302 or 304 SS |
| 16. Body Seal | RPTFE |
| 17. Lockwasher | 302 or 304 SS |
| 18. Grounding Spring | SS |

OPTIONS AVAILABLE:

| (SUFFIX) | OPTION |
|----------|---|
| -01- | Standard |
| -14- | Side Vented Ball (Uni-Directional) |
| -15- | Wheel Handle, Steel |
| -21- | UHMWPE Seats |
| -24- | Fire Safe (Graphite Packing and Seal) |
| -35- | PTFE Seats and Seals |
| -38- | PEEK Seats and Graphite Packing |
| -49- | Assembled Dry |
| -57- | Oxygen Cleaned |
| -60- | Grounded Ball and Stem |
| -65- | MPTFE Seats and Graphite Packing |
| -69- | Drilled and Tapped Purge Port with Plug |
| -80- | Multi-Seal (Super TFE) 87A/88A Series |

For Pressure/Temperature Ratings, Refer to Page M-14, Graph No. 18



| NUMBER | SIZE | A | B | C | D | E | F | G | H | I | J | K | L | M | N | WT. |
|-------------|--------|------|------|------|------|------|------|------|------|-------|-------|-------|-------|---------|------|------|
| 87A-407-01A | 1-1/2" | 1.00 | 6.50 | 3.50 | 4.85 | 6.53 | 0.47 | 1.85 | 2.38 | 1.392 | 0.696 | 0.500 | 0.287 | 1/4-20 | 1.50 | 9.0 |
| 87A-408-01 | 2" | 1.50 | 7.00 | 3.69 | 4.62 | 6.65 | 0.72 | 2.41 | 3.09 | 1.949 | 0.974 | 0.625 | 0.412 | 5/16-18 | 2.00 | 18.0 |



87A-400 Series

Alloy 20 ANSI Class 150 Flanged Standard Port Ball Valve - 3"

STANDARDS COMPLIANCE

Refer to page D-A

STANDARD FEATURES

Refer to page D-A

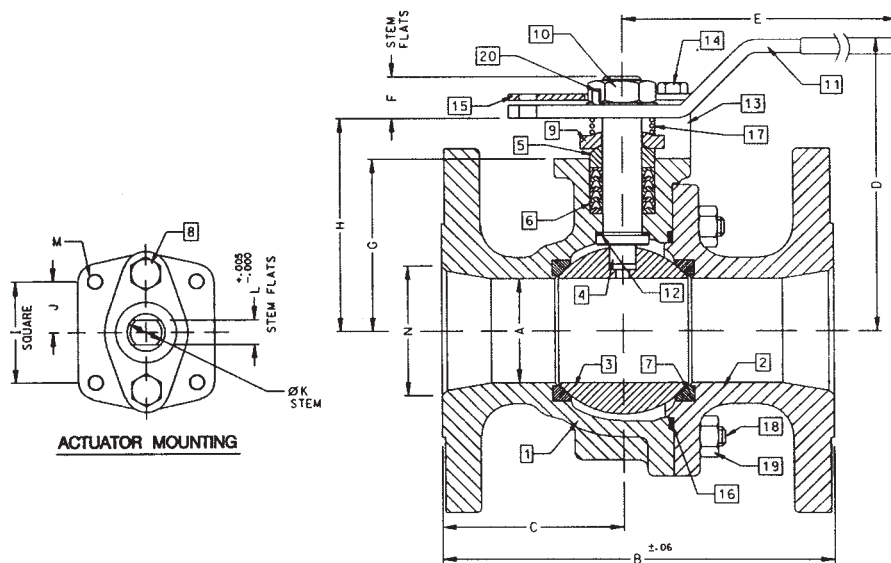
MATERIALS OF CONSTRUCTION

| Description | Material |
|----------------------|--------------------------------|
| 1. Body | ASTM A351 CN7M |
| 2. Retainer | ASTM A351 CN7M |
| 3. Ball | ASTM B473 (UNS N08020) or CN7M |
| 4. Stem | ASTM B473 (UNS N08020) |
| 5. Packing Gland | ASTM A276 Type 316 |
| 6. Stem Seals | PTFE |
| 7. Seats | RPTFE |
| 8. Gland Screws | ASTM A193 B8 Class 1 |
| 9. Gland Plate | 316 SS |
| 10. Stem Nut | 18-8 SS |
| 11. Lever | 316 SS with Vinyl Grip |
| 12. Stem Bearing | RPTFE |
| 13. Stop | ASTM A276 Type 316 |
| 14. Stop Screw | 316 SS |
| 15. Lock Plate | 302 or 304 SS |
| 16. Body Seal | RPTFE |
| 17. Grounding Spring | SS |
| 18. Body Joint Stud | ASTM A193 Grade B8M |
| 19. Body Joint Nut | ASTM A194 Grade 8 |
| 20. Lockwasher | 302 or 304 SS |

OPTIONS AVAILABLE:

| (SUFFIX) | OPTION |
|----------|--|
| -01- | Standard |
| -14- | Side Vented Ball (Uni-Directional) |
| -21- | UHMWPE Seats |
| -24- | Fire Safe (Graphite Packing and Seal) |
| -35- | PTFE Seats and Seals |
| -38- | PEEK Seats and Graphite Packing |
| -49- | Assembled Dry |
| -57- | Oxygen Cleaned |
| -60- | Grounded Ball and Stem |
| -65- | MPTFE Seats and Graphite Packing |
| -69- | Drilled and Tapped Purge Ports with Plugs |
| -70- | 4" Extended Bonnet |
| -80- | Multi-Seal (Super TFE) 87A/88A Series |
| -MG- | Gear Operator with Standard Handwheel |
| -MH- | Gear Operator with Standard Handwheel & Locking Device |
| -MJ- | Gear Operator with Oversize Handwheel |
| -MK- | Gear Operator with Oversize Handwheel & Locking Device |

For Pressure/Temperature Ratings, Refer to Page M-14, Graph No. 18



| NUMBER | SIZE | A | B | C | D | E | F | G | H | I | J | K | L | M | N | WT. |
|------------|------|------|------|------|------|------|------|------|------|-------|-------|-------|-------|---------|------|------|
| 87A-400-01 | 3" | 2.50 | 8.00 | 3.51 | 6.24 | 8.41 | 0.80 | 3.94 | 4.71 | 1.949 | 0.974 | 0.750 | 0.477 | 5/16-18 | 3.00 | 34.3 |



87A-400 Series

Alloy 20 ANSI Class 150 Flanged Standard Port Ball Valve - 4"

STANDARDS COMPLIANCE

Refer to page D-A

STANDARD FEATURES

Refer to page D-A

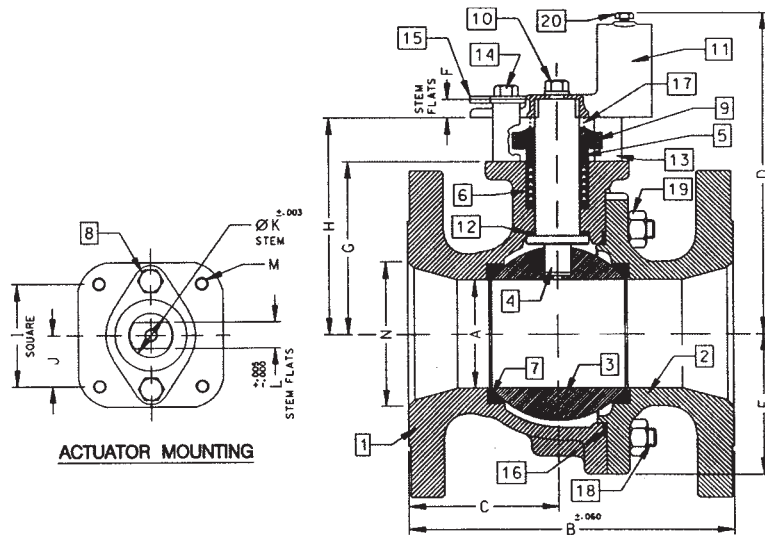
MATERIALS OF CONSTRUCTION

| Description | Material |
|----------------------|--------------------------------|
| 1. Body | ASTM A351 CN7M |
| 2. Retainer | ASTM A351 CN7M |
| 3. Ball | ASTM B473 (UNS N08020) or CN7M |
| 4. Stem | ASTM B473 (UNS N08020) |
| 5. Packing Gland | ASTM A276 Type 316 |
| 6. Stem Seals | PTFE |
| 7. Seats | RPTFE |
| 8. Gland Screws | ASTM A193 B8 Class 1 |
| 9. Gland Plate | 316 SS |
| 10. Adapter Screw | 18-8 SS |
| 11. Handle Adapter | 316 SS with Vinyl Grip |
| 12. Stem Bearing | RPTFE |
| 13. Stop | ASTM A276 Type 316 |
| 14. Stop Screw | 316 SS |
| 15. Lock Plate | 302 or 304 SS |
| 16. Body Seal | RPTFE |
| 17. Grounding Spring | SS |
| 18. Body Joint Stud | ASTM A193 Grade B8M |
| 19. Body Joint Nut | ASTM A194 Grade 8 |
| 20. Adapter Screw | 18-8 SS |
| 21. Pipe Handle | Galvanized Steel (not shown) |

OPTIONS AVAILABLE:

| (SUFFIX) | OPTION |
|----------|--|
| -01- | Standard |
| -14- | Side Vented Ball (Uni-Directional) |
| -21- | UHMWPE Seats |
| -24- | Fire Safe (Graphite Packing and Seal) |
| -35- | PTFE Seats and Seals |
| -49- | Assembled Dry |
| -57- | Oxygen Cleaned |
| -60- | Grounded Ball and Stem |
| -65- | MPTFE Seats and Graphite Packing |
| -69- | Drilled and Tapped Purge Ports with Plugs |
| -70- | 4" Extended Bonnet |
| -80- | Multi-Seal (Super TFE) 87A/88A Series |
| -MG- | Gear Operator with Standard Handwheel |
| -MH- | Gear Operator with Standard Handwheel & Locking Device |
| -MJ- | Gear Operator with Oversize Handwheel |
| -MK- | Gear Operator with Oversize Handwheel & Locking Device |

For Pressure/Temperature Ratings, Refer to Page M-14, Graph No. 18



| NUMBER | SIZE | A | B | C | D | E | F | G | H | I | J | K | L | M | N | WT. |
|------------|------|------|------|------|------|------|------|------|------|-------|-------|-------|-------|--------|------|------|
| 87A-40A-01 | 4" | 3.00 | 9.00 | 4.18 | 8.80 | 3.88 | 0.50 | 4.75 | 5.95 | 2.840 | 1.420 | 1.250 | 0.725 | 3/8-16 | 4.00 | 73.0 |